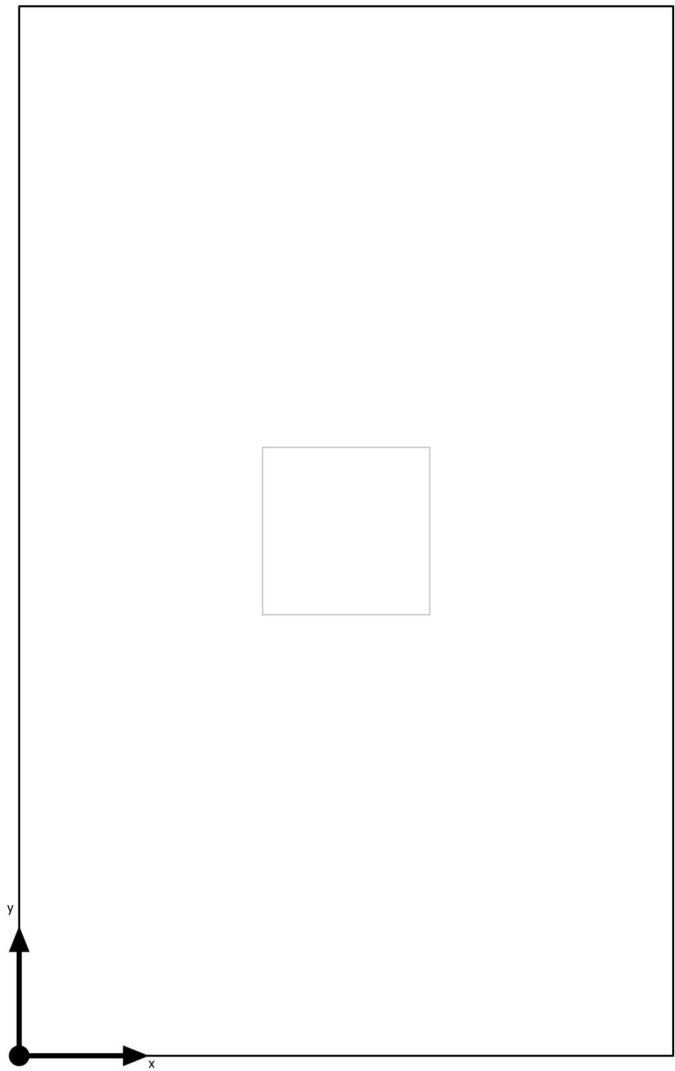


Building 1 · Storey 1 · Room 20 (Emergency light scene)

Summary



Ground area	7.42 m²
Reflection factors	Ceiling: 70.0 %, Walls: 50.0 %, Floor: 20.0 %
Maintenance factor	0.80 (fixed)

Clearance height	2.800 m
Height _{Working plane}	0.000 m
Wall zone _{Working plane}	0.000 m

Building 1 · Storey 1 · Room 20 (Emergency light scene)

Summary

Results

	Symbol	Calculated	Target	Check	Index
Room	Lighting power density	0.00 W/m ²	–		

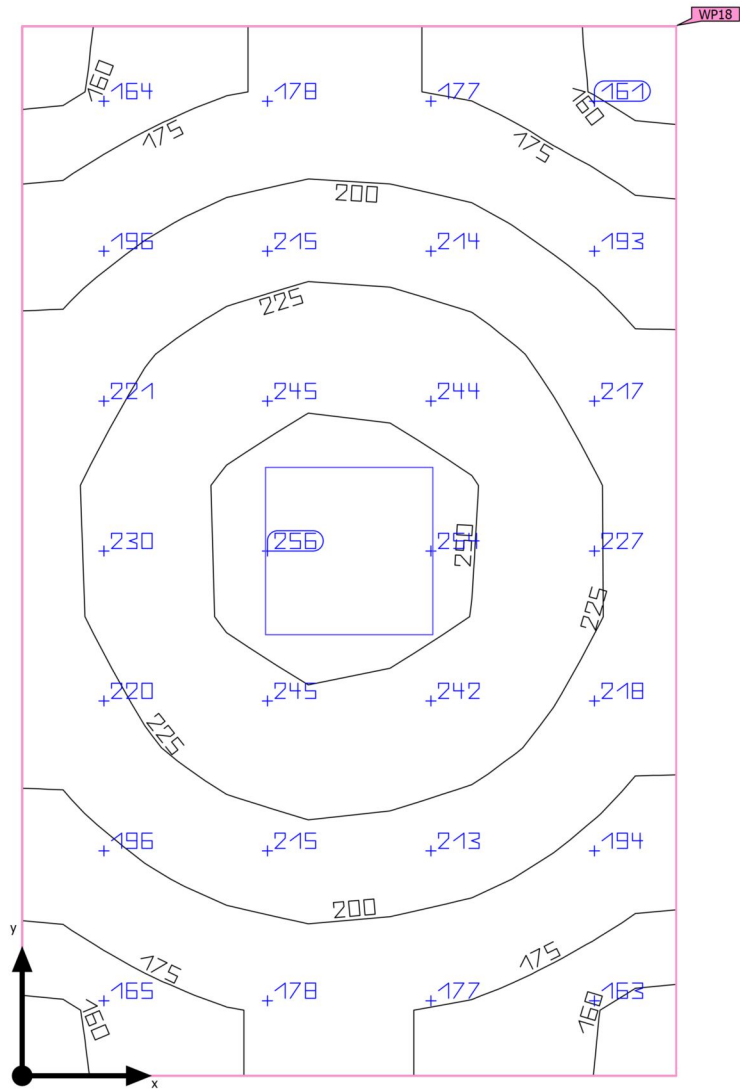
(2) Calculated using DIN:18599-4.

Notes on planning:

The emergency lighting scene was calculated without reflection and without taking into account the placed furniture.

Building 1 · Storey 1 · Room 20 (Light scene 1)

Summary



Ground area	7.42 m ²	Clearance height	2.800 m
Reflection factors	Ceiling: 70.0 %, Walls: 50.0 %, Floor: 20.0 %	Mounting height	2.800 m
Maintenance factor	0.80 (fixed)	Height _{Working plane}	0.000 m
		Wall zone _{Working plane}	0.000 m

Building 1 · Storey 1 · Room 20 (Light scene 1)

Summary

Results


	Symbol	Calculated	Target	Check	Index
Working plane	$\bar{E}_{\text{perpendicular}}$	208 lx	≥ 200 lx	✓	WP18
	$U_o (g_1)$	0.74	≥ 0.40	✓	WP18
Energy estimation ⁽²⁾	Consumption	46.2 kWh/a	max. 300 kWh/a	✓	
Room	Lighting power density	5.66 W/m ²	–		
		2.72 W/m ² /100 lx	–		

(1) Based on a rectangular space of 2.150 m x 3.450 m and SHR of 0.25.

(2) Calculated using DIN:18599-4.

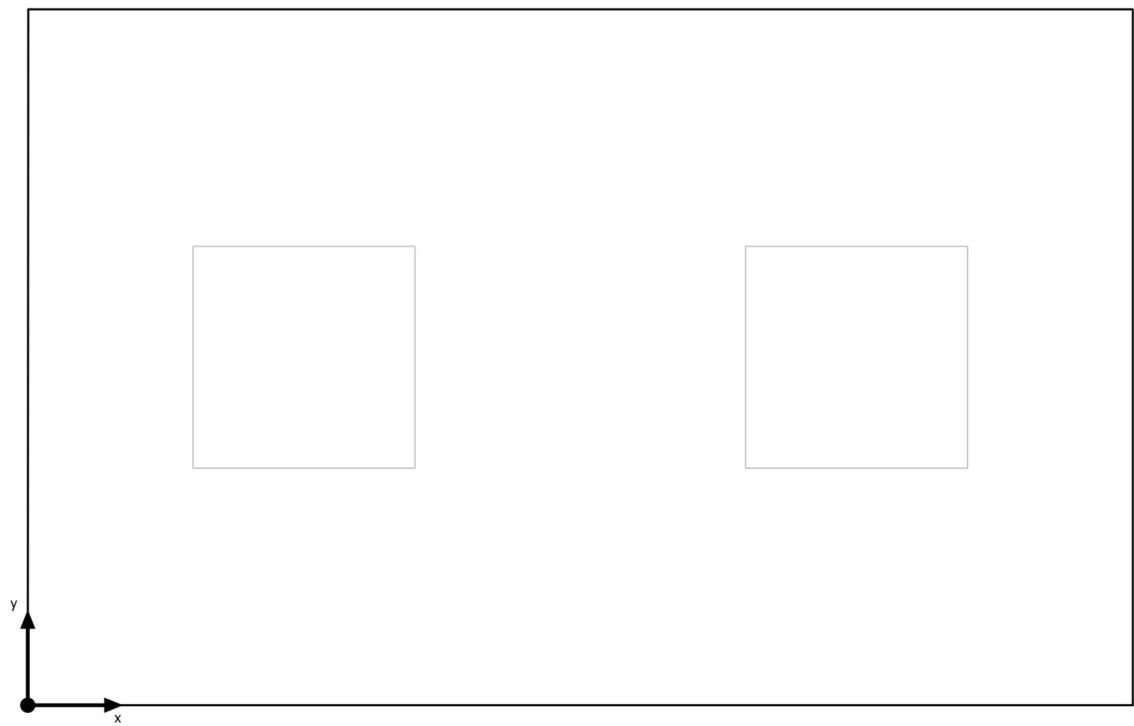
Utilisation profile: Transportational areas - Airports (5.52.1 Arrival and departure halls, baggage claim areas)

Luminaire list

pcs.	Manufacturer	Article No.	Article name	R _{UG}	P	Φ	Luminous efficacy
1	Philips		RC132V SIA W60L60 IA4 OC 43S/840 NO	–	42.0 W	4290 lm	102.2 lm/W
				 –	42.0 W	4290 lm (100 %)	–

Building 1 · Storey 1 · Room 21 (Emergency light scene)

Summary



Ground area	4.06 m ²
Reflection factors	Ceiling: 70.0 %, Walls: 50.0 %, Floor: 20.0 %
Maintenance factor	0.80 (fixed)

Clearance height	2.800 m
Height _{Working plane}	0.800 m
Wall zone _{Working plane}	0.000 m

Building 1 · Storey 1 · Room 21 (Emergency light scene)

Summary

Results

	Symbol	Calculated	Target	Check	Index
Room	Lighting power density	0.00 W/m ²	–		

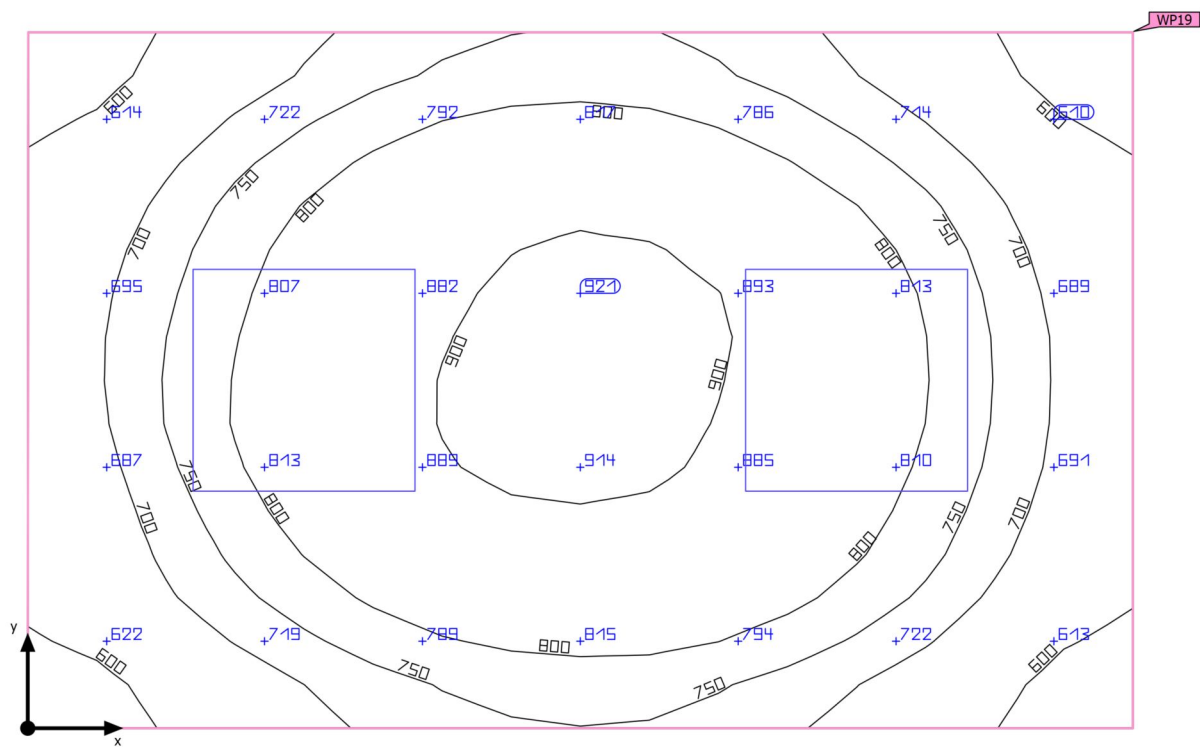
(2) Calculated using DIN:18599-4.

Notes on planning:

The emergency lighting scene was calculated without reflection and without taking into account the placed furniture.

Building 1 · Storey 1 · Room 21 (Light scene 1)

Summary



Ground area	4.06 m ²
Reflection factors	Ceiling: 70.0 %, Walls: 50.0 %, Floor: 20.0 %
Maintenance factor	0.80 (fixed)

Clearance height	2.800 m
Mounting height	2.800 m
Height _{Working plane}	0.800 m
Wall zone _{Working plane}	0.000 m

Building 1 · Storey 1 · Room 21 (Light scene 1)

Summary

Results

	Symbol	Calculated	Target	Check	Index
Working plane	$\bar{E}_{\text{perpendicular}}$	766 lx	≥ 500 lx	✓	WP19
	$U_o (g_1)$	0.71	≥ 0.60	✓	WP19
Energy estimation ⁽²⁾	Consumption	149 kWh/a	max. 150 kWh/a	✓	
Room	Lighting power density	14.77 W/m ²	–		
		1.93 W/m ² /100 lx	–		

(1) Based on a rectangular space of 2.540 m x 1.600 m and SHR of 0.25.

(2) Calculated using DIN:18599-4.

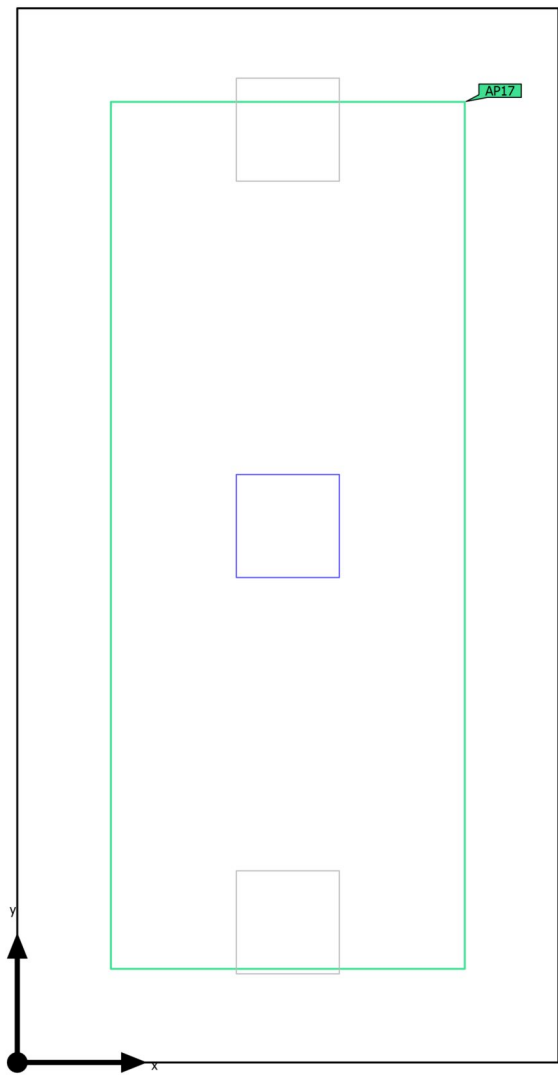
Utilisation profile: DIALux presetting (5.26.2 Standard (office))

Luminaire list

pcs.	Manufacturer	Article No.	Article name	R _{UG}	P	Φ	Luminous efficacy
2	Philips		RC461B PSD W60L60 PSD W60L60 VPC PIP LED40S/- NO	–	30.0 W	4000 lm	133.3 lm/W
			 –	–	30.0 W	4000 lm (100 %)	–

Building 1 · Storey 1 · Room 22 (Emergency light scene)

Summary



Ground area	16.27 m²
Reflection factors	Ceiling: 70.0 %, Walls: 50.0 %, Floor: 20.0 %
Maintenance factor	0.80 (fixed)

Clearance height	2.800 m
Mounting height	2.800 m
Height _{Working plane}	0.800 m
Wall zone _{Working plane}	0.500 m

Building 1 · Storey 1 · Room 22 (Emergency light scene)

Summary

Results

	Symbol	Calculated	Target	Check	Index
Room	Lighting power density	2.58 W/m ²	–		

Anti panic surface


Properties	E _{min} (Target)	E _{max}	U _d (Target)	Index
Anti panic surface (Room 22) Perpendicular illuminance (adaptive) Height: 0.000 m	59.8 lx (≥ 0.50 lx) ✓	194 lx	0.31 (≥ 0.025) ✓	AP17

(2) Calculated using DIN:18599-4.

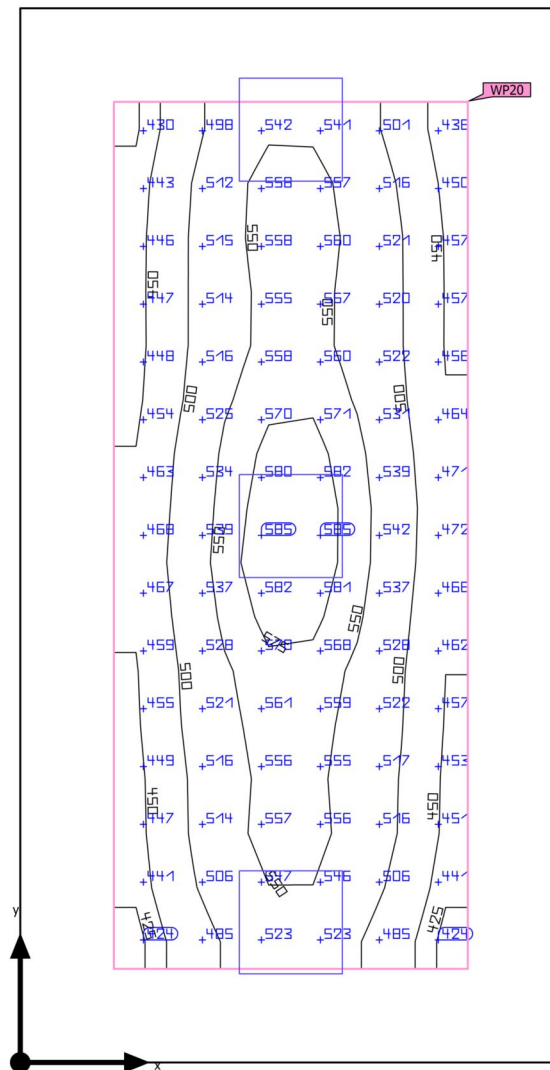
Notes on planning:

The emergency lighting scene was calculated without reflection and without taking into account the placed furniture.

Luminaire list

pcs.	Manufacturer	Article No.	Article name	P	Φ	Luminous efficacy
1	Philips		RC132V SIA W60L60 IA4 OC 43S/840 NO	42.0 W	4290 lm	102.2 lm/W
				 42.0 W	4290 lm (100 %)	-

Building 1 · Storey 1 · Room 22 (Light scene 1)

Summary

Ground area	16.27 m ²	Clearance height	2.800 m
Reflection factors	Ceiling: 70.0 %, Walls: 50.0 %, Floor: 20.0 %	Mounting height	2.800 m
Maintenance factor	0.80 (fixed)	Height _{Working plane}	0.800 m
		Wall zone _{Working plane}	0.500 m

Building 1 · Storey 1 · Room 22 (Light scene 1)

Summary

Results


	Symbol	Calculated	Target	Check	Index
Working plane	$\bar{E}_{\text{perpendicular}}$	511 lx	≥ 500 lx	✓	WP20
	$U_o (g_1)$	0.81	≥ 0.60	✓	WP20
	Lighting power density	14.40 W/m ²	–		
		2.82 W/m ² /100 lx	–		
Energy estimation ⁽²⁾	Consumption	312 kWh/a	max. 600 kWh/a	✓	
Room	Lighting power density	7.74 W/m ²	–		
		1.51 W/m ² /100 lx	–		

(1) Based on a rectangular space of 2.890 m x 5.630 m and SHR of 0.25.

(2) Calculated using DIN:18599-4.

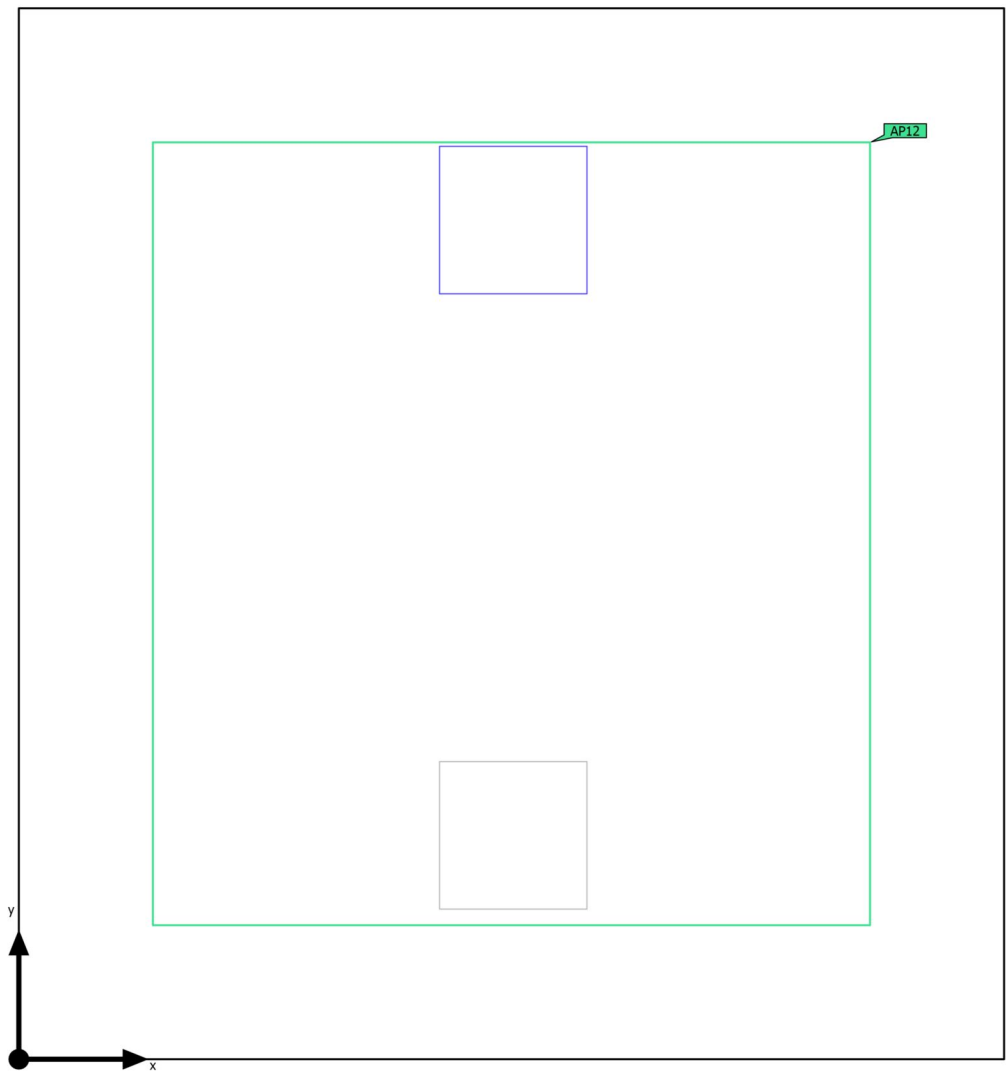
Utilisation profile: DIALux presetting (5.26.2 Standard (office))

Luminaire list

pcs.	Manufacturer	Article No.	Article name	R _{UG}	P	Φ	Luminous efficacy
3	Philips		RC132V SIA W60L60 IA4 OC 43S/840 NO	–	42.0 W	4290 lm	102.2 lm/W
				 –	42.0 W	4290 lm (100 %)	–

Building 1 · Storey 1 · Виндфанг (Emergency light scene)

Summary



Ground area	14.41 m²
Reflection factors	Ceiling: 70.0 %, Walls: 50.0 %, Floor: 20.0 %
Maintenance factor	0.80 (fixed)

Clearance height	2.800 m
Mounting height	2.800 m
Height _{Working plane}	0.800 m
Wall zone _{Working plane}	0.000 m

Building 1 · Storey 1 · Виндфанг (Emergency light scene)

Summary

Results

	Symbol	Calculated	Target	Check	Index
Room	Lighting power density	2.92 W/m ²	–		

Anti panic surface


Properties	E _{min} (Target)	E _{max}	U _d (Target)	Index
Anti panic surface (Виндфанг) Perpendicular illuminance (adaptive) Height: 0.000 m	36.1 lx (≥ 0.50 lx) ✓	197 lx	0.18 (≥ 0.025) ✓	AP12

(2) Calculated using DIN:18599-4.

Notes on planning:

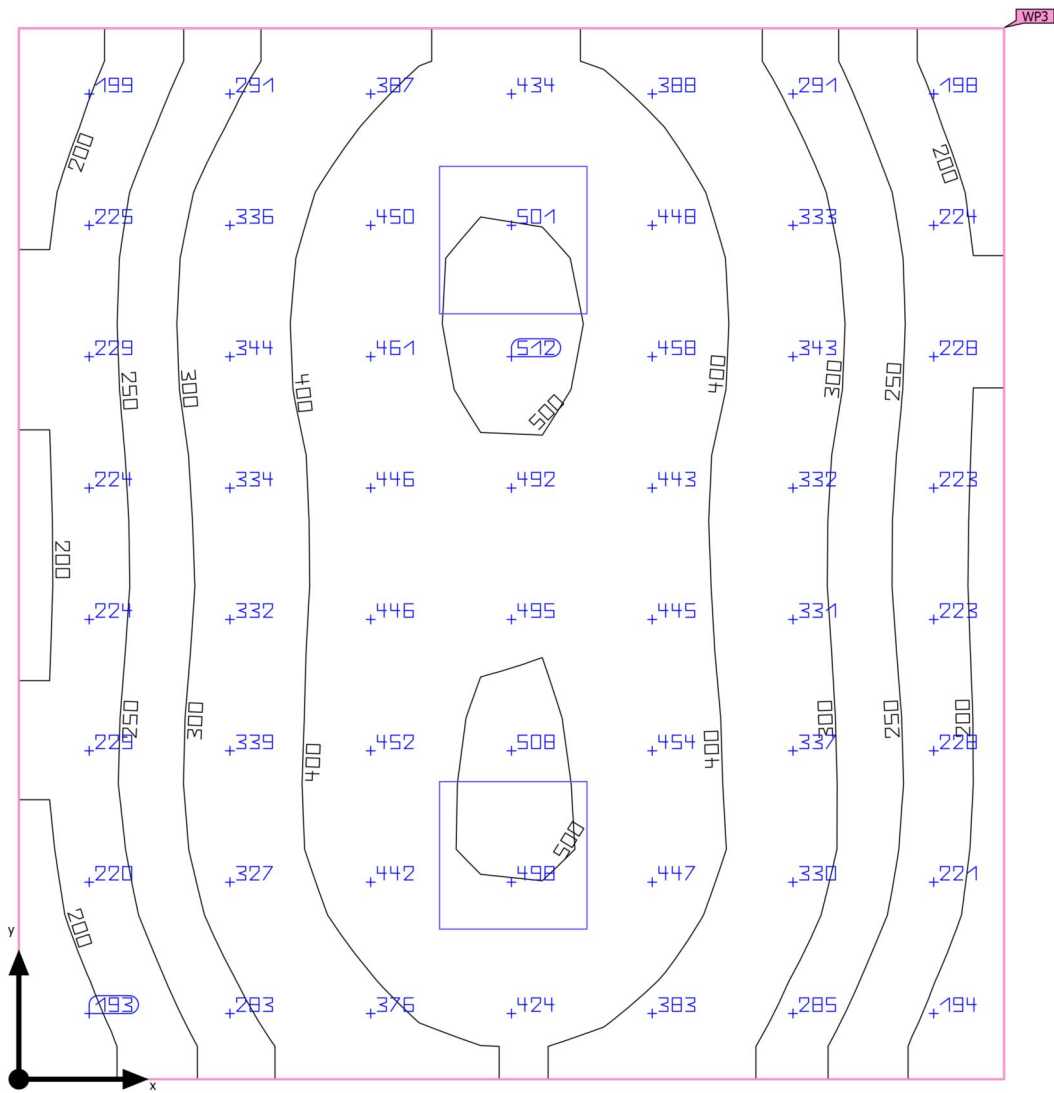
The emergency lighting scene was calculated without reflection and without taking into account the placed furniture.

Luminaire list

pcs.	Manufacturer	Article No.	Article name	P	Φ	Luminous efficacy
1	Philips		RC132V SIA W60L60 IA4 OC 43S/840 NO	42.0 W	4290 lm	102.2 lm/W
				 42.0 W	4290 lm (100 %)	-

Building 1 · Storey 1 · Виндфанг (Light scene 1)

Summary



Ground area	14.41 m ²
Reflection factors	Ceiling: 70.0 %, Walls: 50.0 %, Floor: 20.0 %
Maintenance factor	0.80 (fixed)

Clearance height	2.800 m
Mounting height	2.800 m
Height _{Working plane}	0.800 m
Wall zone _{Working plane}	0.000 m

Building 1 · Storey 1 · Виндфанг (Light scene 1)

Summary

Results


	Symbol	Calculated	Target	Check	Index
Working plane	$\bar{E}_{\text{perpendicular}}$	347 lx	≥ 300 lx	✓	WP3
	$U_o (g_1)$	0.48	≥ 0.40	✓	WP3
Glare valuation ⁽¹⁾	$R_{UG, \text{max}}$	17	≤ 19	✓	
Energy estimation ⁽²⁾	Consumption	11.3 kWh/a	max. 550 kWh/a	✓	
Room	Lighting power density	5.83 W/m ²	–		
		1.68 W/m ² /100 lx	–		

(1) Based on a rectangular space of 3.675 m x 3.920 m and SHR of 0.25.

(2) Calculated using DIN:18599-4.

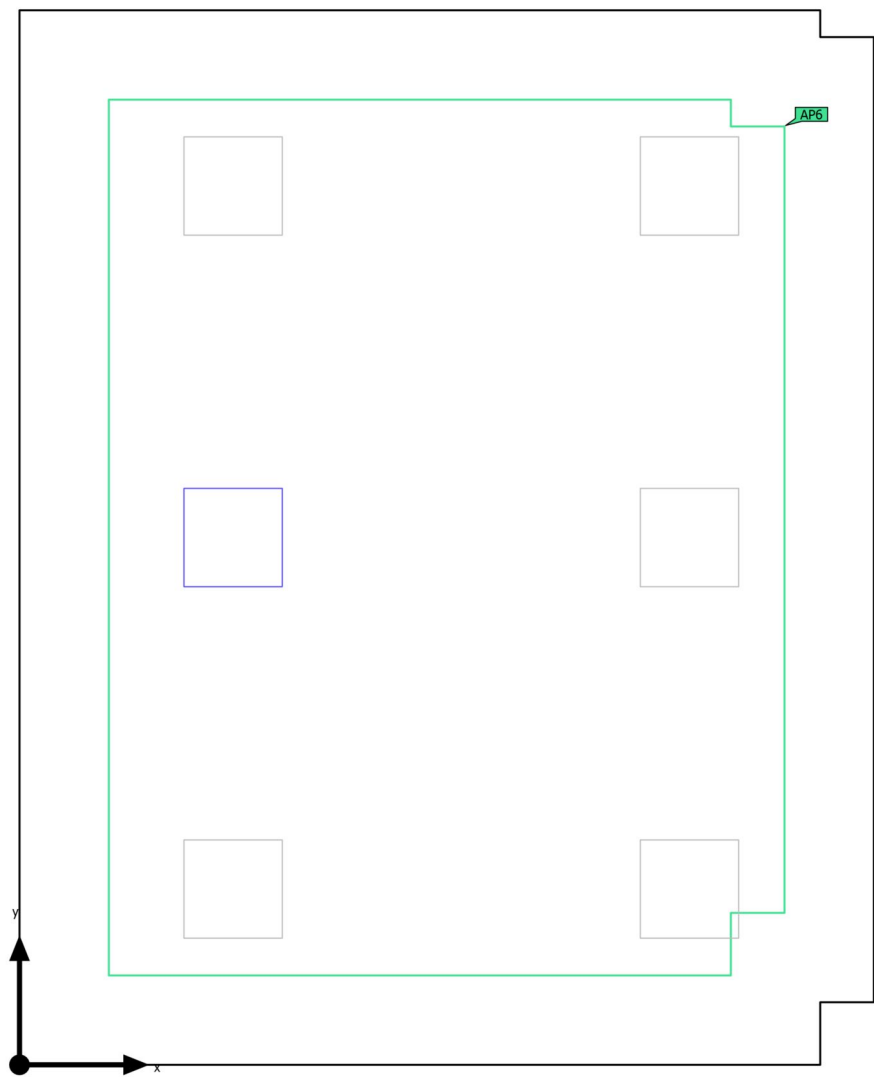
Utilisation profile: Offices (5.26.1 Filing, copying, etc.)

Luminaire list

pcs.	Manufacturer	Article No.	Article name	R_{UG}	P	Φ	Luminous efficacy
2	Philips		RC132V SIA W60L60 IA4 OC 43S/840 NO	17	42.0 W	4290 lm	102.2 lm/W
				 –	42.0 W	4290 lm (100 %)	–

Building 1 · Storey 1 · Заседателна зала (Emergency light scene)

Summary



Ground area	28.05 m²
Reflection factors	Ceiling: 70.0 %, Walls: 50.0 %, Floor: 20.0 %
Maintenance factor	0.80 (fixed)

Clearance height	2.800 m
Mounting height	2.800 m
Height _{Working plane}	0.800 m
Wall zone _{Working plane}	0.200 m

Building 1 · Storey 1 · Заседателна зала (Emergency light scene)

Summary

Results

	Symbol	Calculated	Target	Check	Index
Room	Lighting power density	1.50 W/m ²	–		

Anti panic surface


Properties	E _{min} (Target)	E _{max}	U _d (Target)	Index
Anti panic surface (Заседателна зала) Perpendicular illuminance (adaptive) Height: 0.000 m	15.9 lx (≥ 0.50 lx) ✓	197 lx	0.081 (≥ 0.025) ✓	AP6

(2) Calculated using DIN:18599-4.

Notes on planning:

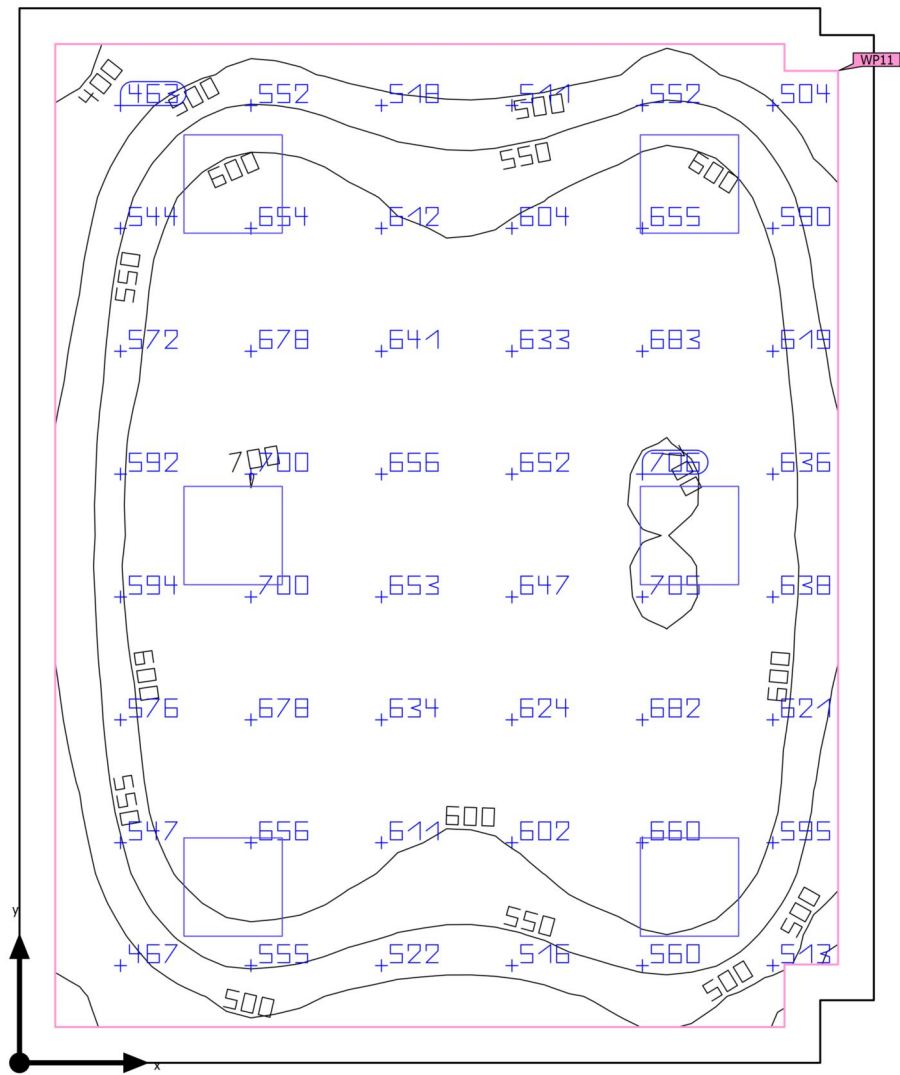
The emergency lighting scene was calculated without reflection and without taking into account the placed furniture.

Luminaire list

pcs.	Manufacturer	Article No.	Article name	P	Φ	Luminous efficacy
1	Philips		RC132V SIA W60L60 IA4 OC 43S/840 NO	42.0 W	4290 lm	102.2 lm/W
				 42.0 W	4290 lm (100 %)	-

Building 1 · Storey 1 · Заседателна зала (Light scene 1)

Summary



Ground area	28.05 m ²
Reflection factors	Ceiling: 70.0 %, Walls: 50.0 %, Floor: 20.0 %
Maintenance factor	0.80 (fixed)

Clearance height	2.800 m
Mounting height	2.800 m
Height _{Working plane}	0.800 m
Wall zone _{Working plane}	0.200 m

Building 1 · Storey 1 · Заседателна зала (Light scene 1)

Summary

Results

	Symbol	Calculated	Target	Check	Index
Working plane	$\bar{E}_{\text{perpendicular}}$	603 lx	≥ 500 lx	✓	WP11
	$U_o (g_1)$	0.62	≥ 0.60	✓	WP11
	Lighting power density	10.53 W/m ²	–		
		1.75 W/m ² /100 lx	–		
Glare valuation ⁽¹⁾	$R_{UG, \text{max}}$	18	≤ 19	✓	
Energy estimation ⁽²⁾	Consumption	624 kWh/a	max. 1000 kWh/a	✓	
Room	Lighting power density	8.98 W/m ²	–		
		1.49 W/m ² /100 lx	–		

(1) Based on a rectangular space of 4.780 m x 5.900 m and SHR of 0.25.

(2) Calculated using DIN:18599-4.

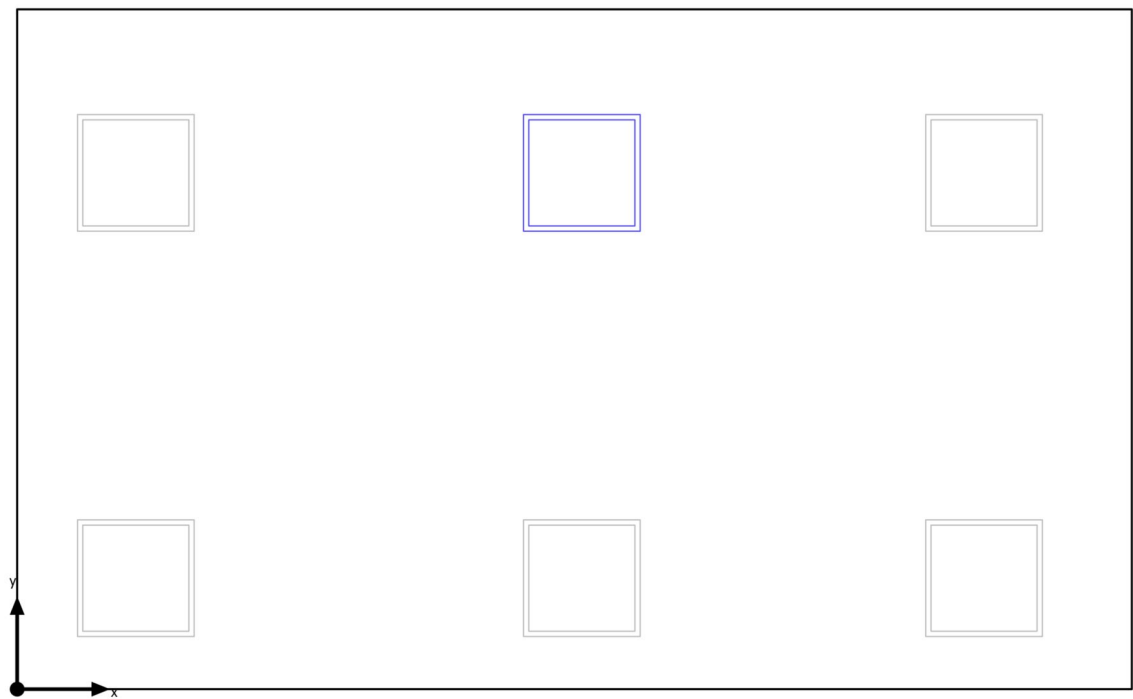
Utilisation profile: DIALux presetting (5.26.2 Standard (office))

Luminaire list

pcs.	Manufacturer	Article No.	Article name	R_{UG}	P	Φ	Luminous efficacy
6	Philips		RC132V SIA W60L60 IA4 OC 43S/840 NO	18	42.0 W	4290 lm	102.2 lm/W
				 –	42.0 W	4290 lm (100 %)	–

Building 1 · Storey 1 · Заседателна зала (Emergency light scene)

Summary



Ground area	19.85 m ²
Reflection factors	Ceiling: 70.0 %, Walls: 50.0 %, Floor: 20.0 %
Maintenance factor	0.80 (fixed)

Clearance height	2.800 m
Mounting height	2.832 m
Height _{Working plane}	0.800 m
Wall zone _{Working plane}	0.000 m

Building 1 · Storey 1 · Заседателна зала (Emergency light scene)

Summary

Results

	Symbol	Calculated	Target	Check	Index
Room	Lighting power density	1.81 W/m ²	–		

(2) Calculated using DIN:18599-4.

Notes on planning:

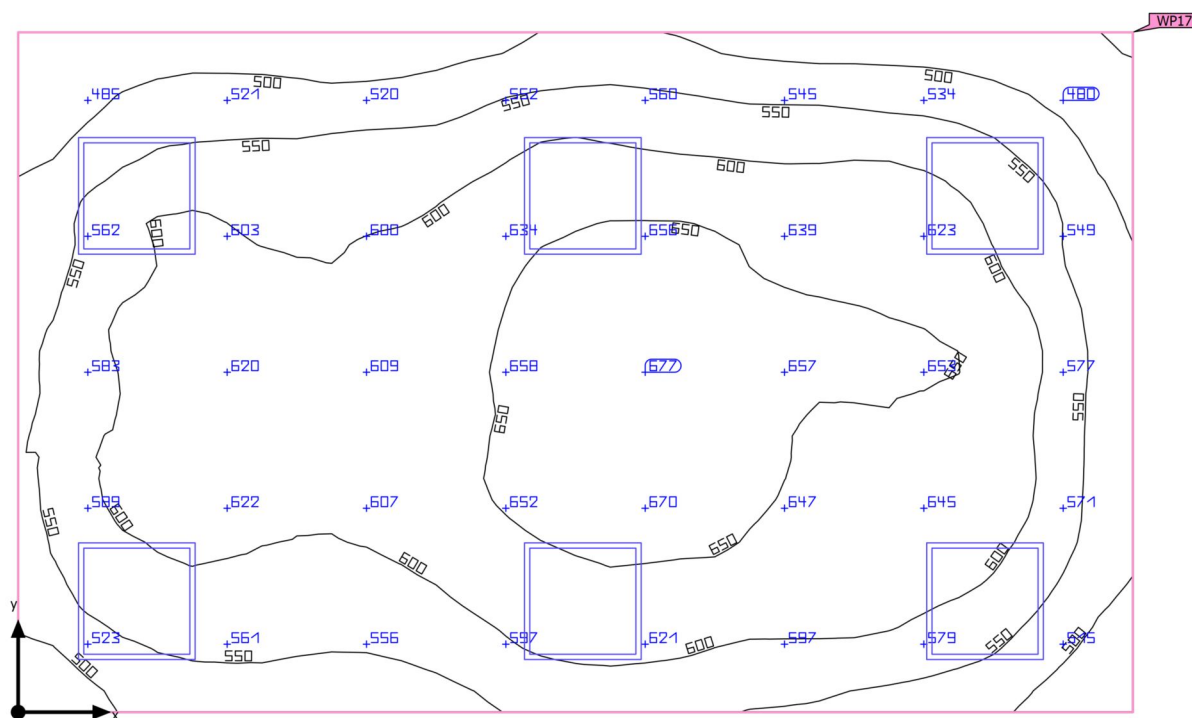
The emergency lighting scene was calculated without reflection and without taking into account the placed furniture.

Luminaire list

pcs.	Manufacturer	Article No.	Article name	P	Φ	Luminous efficacy
1	Philips		RC132V W60L60 1 xLED36S/840 OC	36.0 W	3599 lm	100.0 lm/W
				 36.0 W	3599 lm (100 %)	-

Building 1 · Storey 1 · Заседателна зала (Light scene 1)

Summary



Ground area	19.85 m ²
Reflection factors	Ceiling: 70.0 %, Walls: 50.0 %, Floor: 20.0 %
Maintenance factor	0.80 (fixed)

Clearance height	2.800 m
Mounting height	2.832 m
Height _{Working plane}	0.800 m
Wall zone _{Working plane}	0.000 m

Building 1 · Storey 1 · Заседателна зала (Light scene 1)

Summary

Results


	Symbol	Calculated	Target	Check	Index
Working plane	$\bar{E}_{\text{perpendicular}}$	588 lx	≥ 500 lx	✓	WP17
	$U_o (g_1)$	0.67	≥ 0.60	✓	WP17
Energy estimation ⁽²⁾	Consumption	535 kWh/a	max. 700 kWh/a	✓	
Room	Lighting power density	10.88 W/m ²	–		
		1.85 W/m ² /100 lx	–		

(1) Based on a rectangular space of 5.705 m x 3.480 m and SHR of 0.25.

(2) Calculated using DIN:18599-4.

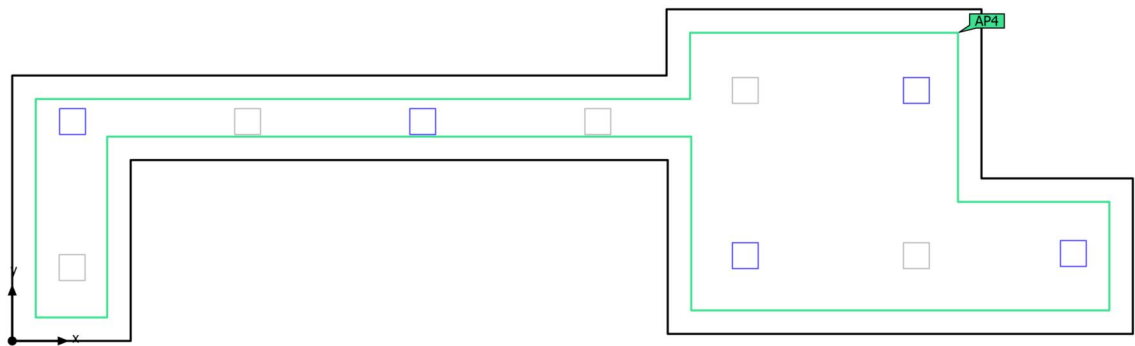
Utilisation profile: DIALux presetting (5.26.2 Standard (office))

Luminaire list

pcs.	Manufacturer	Article No.	Article name	R _{UG}	P	Φ	Luminous efficacy
6	Philips		RC132V W60L60 1 xLED36S/840 OC	–	36.0 W	3599 lm	100.0 lm/W
				 –	36.0 W	3599 lm (100 %)	–

Building 1 · Storey 1 · Коридор (Emergency light scene)

Summary



Ground area	91.62 m ²	Clearance height	2.800 m
Reflection factors	Ceiling: 70.0 %, Walls: 50.0 %, Floor: 20.0 %	Mounting height	2.800 m
Maintenance factor	0.80 (fixed)	Height _{Working plane}	0.800 m
		Wall zone _{Working plane}	0.150 m

Building 1 · Storey 1 · Коридор (Emergency light scene)

Summary

Results

	Symbol	Calculated	Target	Check	Index
Room	Lighting power density	2.29 W/m ²	–		

Anti panic surface


Properties	E _{min} (Target)	E _{max}	U _d (Target)	Index
Anti panic surface (Коридор) Perpendicular illuminance (adaptive) Height: 0.000 m	10.1 lx (≥ 0.50 lx) ✓	204 lx	0.050 (≥ 0.025) ✓	AP4

(2) Calculated using DIN:18599-4.

Notes on planning:

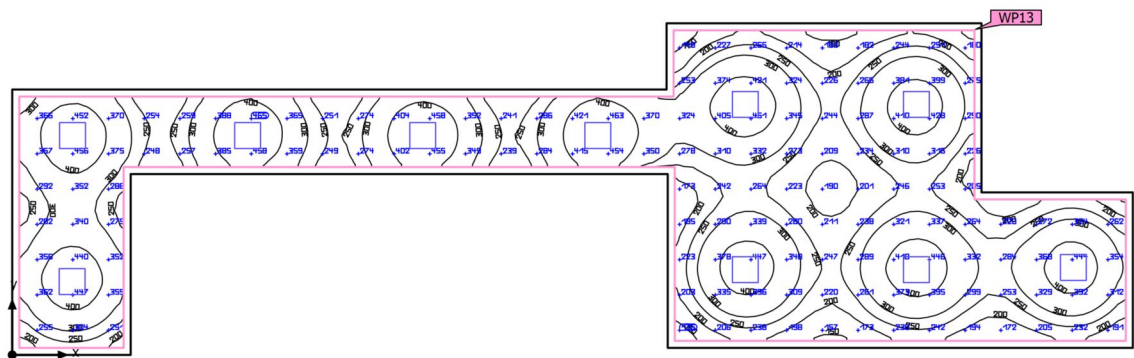
The emergency lighting scene was calculated without reflection and without taking into account the placed furniture.

Luminaire list

pcs.	Manufacturer	Article No.	Article name	P	Φ	Luminous efficacy
5	Philips		RC132V SIA W60L60 IA4 OC 43S/840 NO	42.0 W	4290 lm	102.2 lm/W
				 42.0 W	4290 lm (100 %)	-

Building 1 · Storey 1 · Коридор (Light scene 1)

Summary



Ground area	91.62 m ²	Clearance height	2.800 m
Reflection factors	Ceiling: 70.0 %, Walls: 50.0 %, Floor: 20.0 %	Mounting height	2.800 m
Maintenance factor	0.80 (fixed)	Height _{Working plane}	0.800 m
		Wall zone _{Working plane}	0.150 m

Building 1 · Storey 1 · Коридор (Light scene 1)

Summary

Results

	Symbol	Calculated	Target	Check	Index
Working plane	$\bar{E}_{\text{perpendicular}}$	307 lx	≥ 200 lx	✓	WP13
	$U_o (g_1)$	0.42	≥ 0.40	✓	WP13
	Lighting power density	5.16 W/m ²	–		
		1.68 W/m ² /100 lx	–		
Glare valuation ⁽¹⁾	$R_{UG, \text{max}}$	19	≤ 25	✓	
Energy estimation ⁽²⁾	Consumption	69.3 kWh/a	max. 3250 kWh/a	✓	
Room	Lighting power density	4.58 W/m ²	–		
		1.49 W/m ² /100 lx	–		

(1) Based on a rectangular space of 7.060 m x 23.840 m and SHR of 0.25.

(2) Calculated using DIN:18599-4.

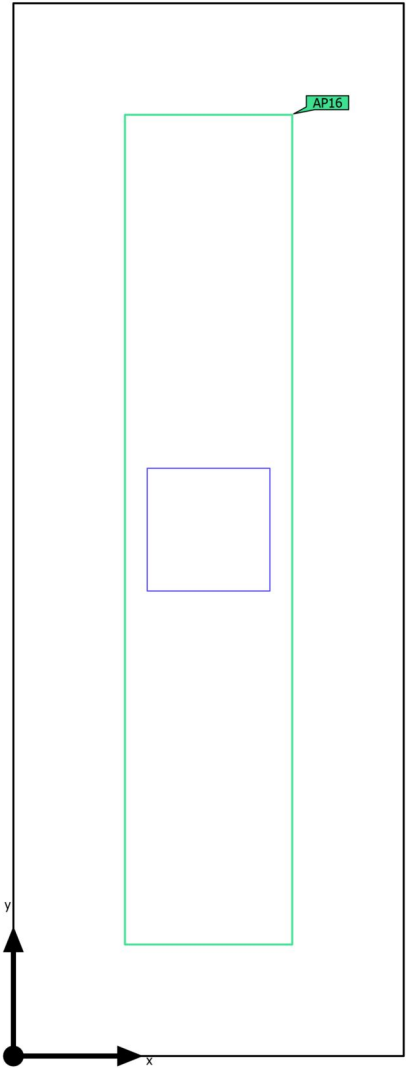
Utilisation profile: Offices (5.26.7 Archives)

Luminaire list

pcs.	Manufacturer	Article No.	Article name	R_{UG}	P	Φ	Luminous efficacy
10	Philips		RC132V SIA W60L60 IA4 OC 43S/840 NO	19	42.0 W	4290 lm	102.2 lm/W
				 –	42.0 W	4290 lm (100 %)	–

Building 1 · Storey 1 · Коридор 2 (Emergency light scene)

Summary



Ground area	8.26 m ²	Clearance height	2.800 m
Reflection factors	Ceiling: 70.0 %, Walls: 50.0 %, Floor: 20.0 %	Mounting height	2.800 m
Maintenance factor	0.80 (fixed)	Height _{Working plane}	0.000 m
		Wall zone _{Working plane}	0.000 m

Building 1 · Storey 1 · Коридор 2 (Emergency light scene)

Summary

Results

	Symbol	Calculated	Target	Check	Index
Room	Lighting power density	5.08 W/m ²	–		

Anti panic surface


Properties	E _{min} (Target)	E _{max}	U _d (Target)	Index
Anti panic surface (Коридор 2) Perpendicular illuminance (adaptive) Height: 0.000 m	99.5 lx (≥ 0.50 lx) ✓	195 lx	0.51 (≥ 0.025) ✓	AP16

(2) Calculated using DIN:18599-4.

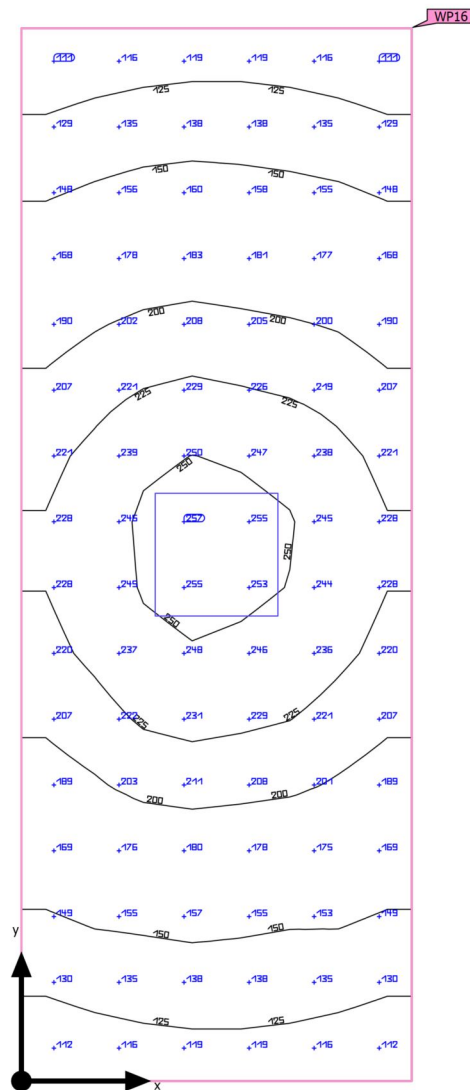
Notes on planning:

The emergency lighting scene was calculated without reflection and without taking into account the placed furniture.

Luminaire list

pcs.	Manufacturer	Article No.	Article name	P	Φ	Luminous efficacy
1	Philips		RC132V SIA W60L60 IA4 OC 43S/840 NO	42.0 W	4290 lm	102.2 lm/W
				 42.0 W	4290 lm (100 %)	-

Building 1 · Storey 1 · Коридор 2 (Light scene 1)

Summary

Ground area	8.26 m ²	Clearance height	2.800 m
Reflection factors	Ceiling: 70.0 %, Walls: 50.0 %, Floor: 20.0 %	Mounting height	2.800 m
Maintenance factor	0.80 (fixed)	Height _{Working plane}	0.000 m
		Wall zone _{Working plane}	0.000 m

Building 1 · Storey 1 · Коридор 2 (Light scene 1)

Summary

Results


	Symbol	Calculated	Target	Check	Index
Working plane	$\bar{E}_{\text{perpendicular}}$	185 lx	$\geq 100 \text{ lx}$	✓	WP16
	$U_o (g_1)$	0.60	≥ 0.40	✓	WP16
Glare valuation ⁽¹⁾	$R_{UG, \text{max}}$	17	≤ 28	✓	
Energy estimation ⁽²⁾	Consumption	46.2 kWh/a	max. 300 kWh/a	✓	
Room	Lighting power density	5.08 W/m ²	–		
		2.76 W/m ² /100 lx	–		

(1) Based on a rectangular space of 4.720 m x 1.750 m and SHR of 0.25.

(2) Calculated using DIN:18599-4.

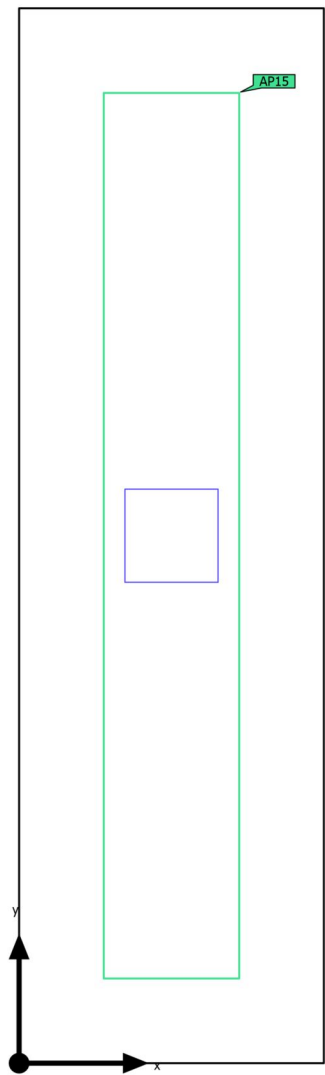
Utilisation profile: Traffic zones inside buildings (5.1.1 Circulation areas and corridors)

Luminaire list

pcs.	Manufacturer	Article No.	Article name	R_{UG}	P	Φ	Luminous efficacy
1	Philips		RC132V SIA W60L60 IA4 OC 43S/840 NO	17	42.0 W	4290 lm	102.2 lm/W
				 –	42.0 W	4290 lm (100 %)	–

Building 1 · Storey 1 · Кориор 3 (Emergency light scene)

Summary



Ground area	11.21 m ²	Clearance height	2.800 m
Reflection factors	Ceiling: 70.0 %, Walls: 50.0 %, Floor: 20.0 %	Mounting height	2.800 m
Maintenance factor	0.80 (fixed)	Height _{Working plane}	0.000 m
		Wall zone _{Working plane}	0.100 m

Building 1 · Storey 1 · Кориор 3 (Emergency light scene)

Summary

Results

	Symbol	Calculated	Target	Check	Index
Room	Lighting power density	3.75 W/m ²	–		

Anti panic surface


Properties	E _{min} (Target)	E _{max}	U _d (Target)	Index
Anti panic surface (Кориор 3) Perpendicular illuminance (adaptive) Height: 0.000 m	54.3 lx (≥ 0.50 lx) ✓	193 lx	0.28 (≥ 0.025) ✓	AP15

(2) Calculated using DIN:18599-4.

Notes on planning:

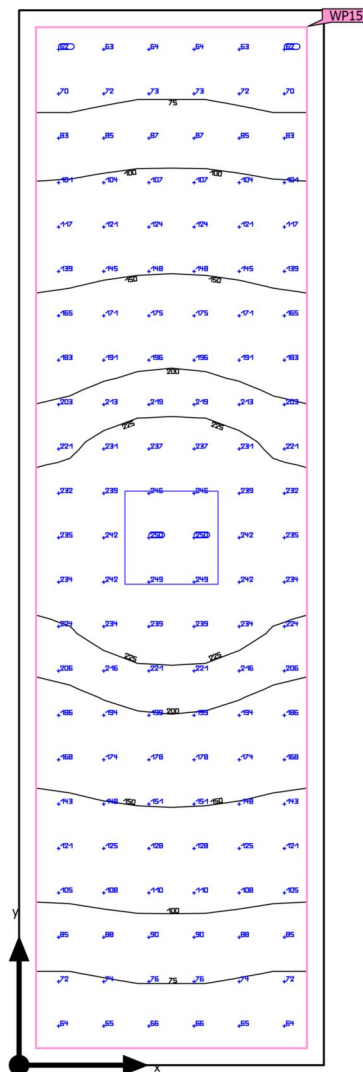
The emergency lighting scene was calculated without reflection and without taking into account the placed furniture.

Luminaire list

pcs.	Manufacturer	Article No.	Article name	P	Φ	Luminous efficacy
1	Philips		RC132V SIA W60L60 IA4 OC 43S/840 NO	42.0 W	4290 lm	102.2 lm/W
				 42.0 W	4290 lm (100 %)	-

Building 1 · Storey 1 · Кориор 3 (Light scene 1)

Summary



Ground area	11.21 m ²	Clearance height	2.800 m
Reflection factors	Ceiling: 70.0 %, Walls: 50.0 %, Floor: 20.0 %	Mounting height	2.800 m
Maintenance factor	0.80 (fixed)	Height _{Working plane}	0.000 m
		Wall zone _{Working plane}	0.100 m

Building 1 · Storey 1 · Кориор 3 (Light scene 1)

Summary

Results


	Symbol	Calculated	Target	Check	Index
Working plane	$\bar{E}_{\text{perpendicular}}$	153 lx	≥ 100 lx	✓	WP15
	$U_o (g_1)$	0.40	≥ 0.40	✓	WP15
	Lighting power density	4.35 W/m ²	–		
		2.84 W/m ² /100 lx	–		
Glare valuation ⁽¹⁾	$R_{UG, \text{max}}$	17	≤ 28	✓	
Energy estimation ⁽²⁾	Consumption	46.2 kWh/a	max. 400 kWh/a	✓	
Room	Lighting power density	3.75 W/m ²	–		
		2.44 W/m ² /100 lx	–		

(1) Based on a rectangular space of 1.800 m x 6.230 m and SHR of 0.25.

(2) Calculated using DIN:18599-4.

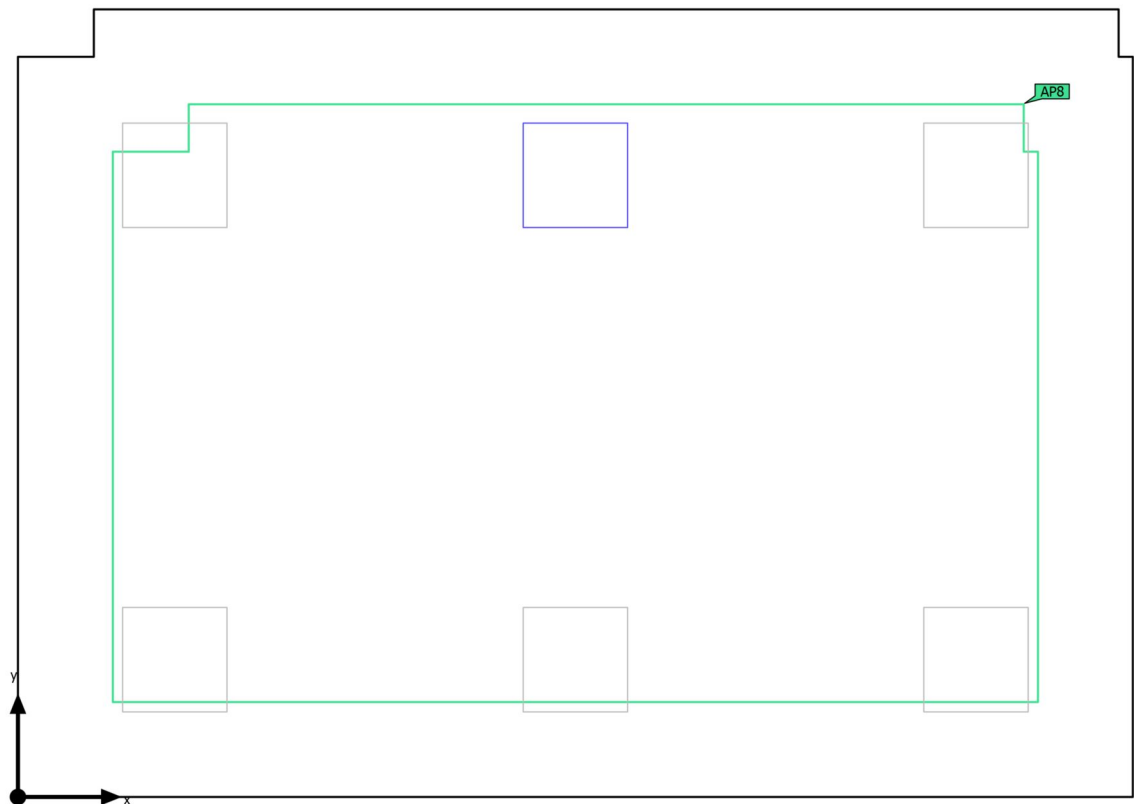
Utilisation profile: Traffic zones inside buildings (5.1.1 Circulation areas and corridors)

Luminaire list

pcs.	Manufacturer	Article No.	Article name	R_{UG}	P	Φ	Luminous efficacy
1	Philips		RC132V SIA W60L60 IA4 OC 43S/840 NO	17	42.0 W	4290 lm	102.2 lm/W
				 –	42.0 W	4290 lm (100 %)	–

Building 1 · Storey 1 · Офис - 24,26м2 (Emergency light scene)

Summary



Ground area	24.26 m ²
Reflection factors	Ceiling: 70.0 %, Walls: 50.0 %, Floor: 20.0 %
Maintenance factor	0.80 (fixed)

Clearance height	2.800 m
Mounting height	2.800 m
Height _{Working plane}	0.800 m
Wall zone _{Working plane}	0.000 m

Building 1 · Storey 1 · Офис - 24,26м2 (Emergency light scene)

Summary

Results

	Symbol	Calculated	Target	Check	Index
Room	Lighting power density	1.73 W/m ²	–		

Anti panic surface


Properties	E _{min} (Target)	E _{max}	U _d (Target)	Index
Anti panic surface (Офис - 24,26м2) Perpendicular illuminance (adaptive) Height: 0.000 m	19.4 lx (≥ 0.50 lx) ✓	194 lx	0.100 (≥ 0.025) ✓	AP8

(2) Calculated using DIN:18599-4.

Notes on planning:

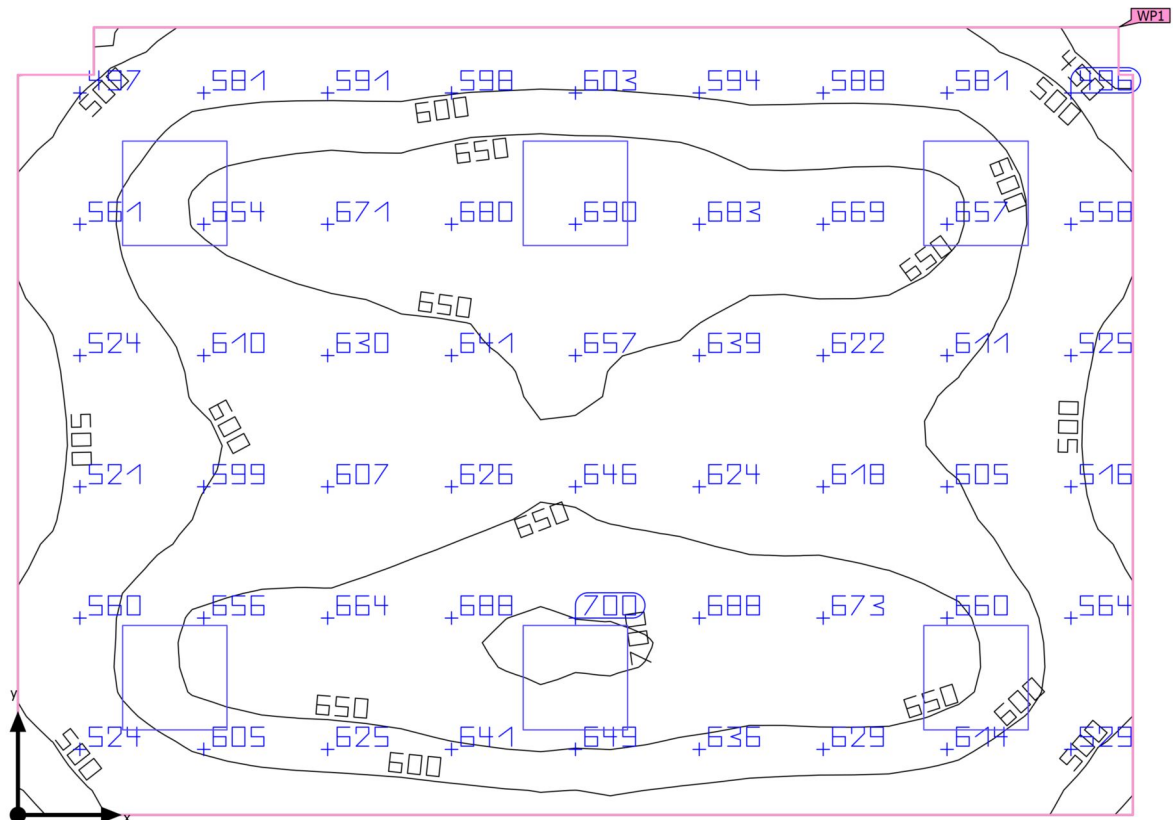
The emergency lighting scene was calculated without reflection and without taking into account the placed furniture.

Luminaire list

pcs.	Manufacturer	Article No.	Article name	P	Φ	Luminous efficacy
1	Philips		RC132V SIA W60L60 IA4 OC 43S/840 NO	42.0 W	4290 lm	102.2 lm/W
				 42.0 W	4290 lm (100 %)	-

Building 1 · Storey 1 · Офис - 24,26м2 (Light scene 1)

Summary



Ground area	24.26 m²	Clearance height	2.800 m
Reflection factors	Ceiling: 70.0 %, Walls: 50.0 %, Floor: 20.0 %	Mounting height	2.800 m
Maintenance factor	0.80 (fixed)	Height _{working plane}	0.800 m
		Wall zone _{Working plane}	0.000 m

Building 1 · Storey 1 · Офис - 24,26м2 (Light scene 1)

Summary

Results


	Symbol	Calculated	Target	Check	Index
Working plane	$\bar{E}_{\text{perpendicular}}$	610 lx	≥ 500 lx	✓	WP1
	$U_o (g_1)$	0.69	≥ 0.60	✓	WP1
Glare valuation ⁽¹⁾	$R_{UG, \text{max}}$	18	≤ 19	✓	
Energy estimation ⁽²⁾	Consumption	624 kWh/a	max. 900 kWh/a	✓	
Room	Lighting power density	10.39 W/m ²	–		
		1.70 W/m ² /100 lx	–		

(1) Based on a rectangular space of 5.875 m x 4.150 m and SHR of 0.25.

(2) Calculated using DIN:18599-4.

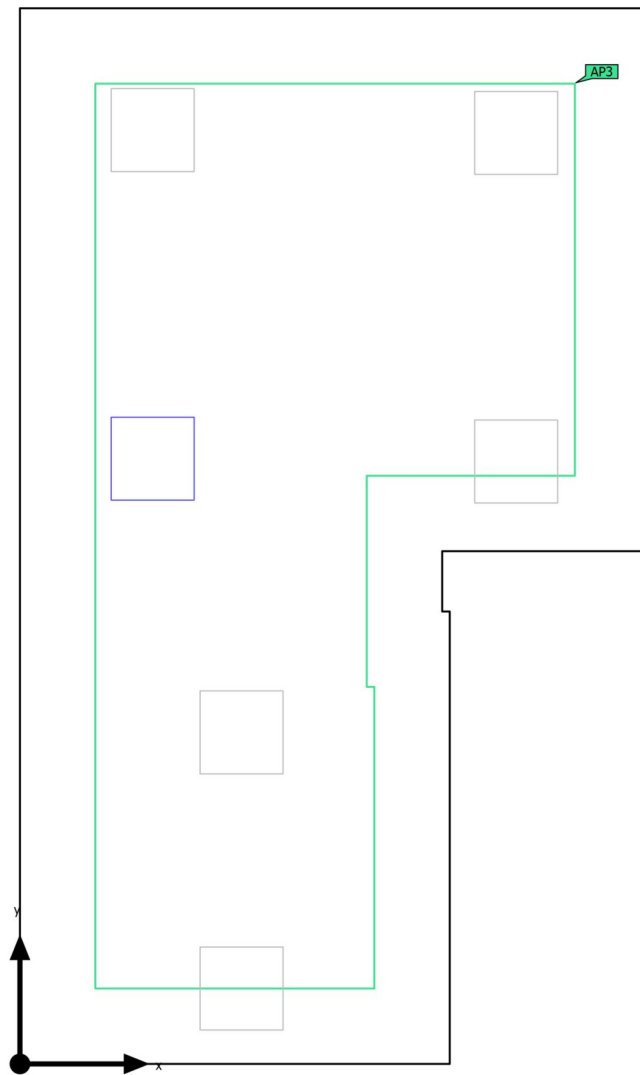
Utilisation profile: DIALux presetting (5.26.2 Standard (office))

Luminaire list

pcs.	Manufacturer	Article No.	Article name	R_{UG}	P	Φ	Luminous efficacy
6	Philips		RC132V SIA W60L60 IA4 OC 43S/840 NO	17	42.0 W	4290 lm	102.2 lm/W
				 –	42.0 W	4290 lm (100 %)	–

Building 1 · Storey 1 · Офис - 24,80м2 (Emergency light scene)

Summary



Ground area	24.72 m²	Clearance height	2.450 m
Reflection factors	Ceiling: 70.0 %, Walls: 50.0 %, Floor: 20.0 %	Mounting height	2.800 m
Maintenance factor	0.80 (fixed)	Height _{working plane}	0.800 m
		Wall zone _{Working plane}	0.200 m

Building 1 · Storey 1 · Офис - 24,80м2 (Emergency light scene)

Summary

Results

	Symbol	Calculated	Target	Check	Index
Room	Lighting power density	1.70 W/m ²	–		

Anti panic surface


Properties	E _{min} (Target)	E _{max}	U _d (Target)	Index
Anti panic surface (Офис - 24,80м2) Perpendicular illuminance (adaptive) Height: 0.000 m	15.6 lx (≥ 0.50 lx) ✓	197 lx	0.079 (≥ 0.025) ✓	AP3

(2) Calculated using DIN:18599-4.

Notes on planning:

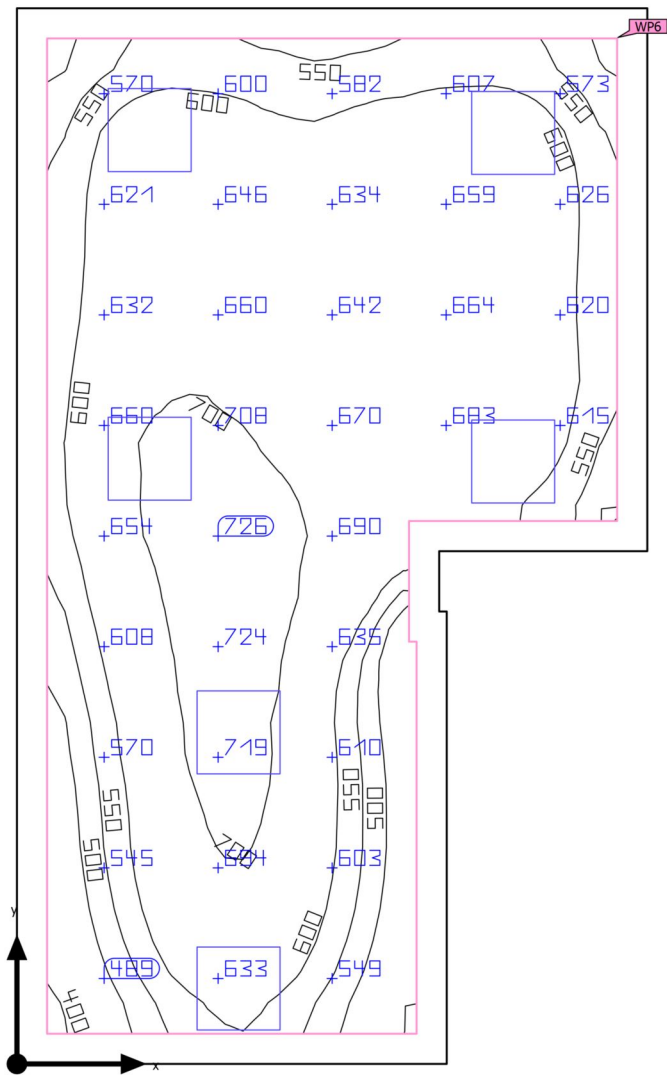
The emergency lighting scene was calculated without reflection and without taking into account the placed furniture.

Luminaire list

pcs.	Manufacturer	Article No.	Article name	P	Φ	Luminous efficacy
1	Philips		RC132V SIA W60L60 IA4 OC 43S/840 NO	42.0 W	4290 lm	102.2 lm/W
				 42.0 W	4290 lm (100 %)	-

Building 1 · Storey 1 · Офис - 24,80м2 (Light scene 1)

Summary



Ground area	24.72 m ²	Clearance height	2.450 m
Reflection factors	Ceiling: 70.0 %, Walls: 50.0 %, Floor: 20.0 %	Mounting height	2.800 m
Maintenance factor	0.80 (fixed)	Height _{Working plane}	0.800 m
		Wall zone _{Working plane}	0.200 m

Building 1 · Storey 1 · Офис - 24,80м2 (Light scene 1)

Summary

Results


	Symbol	Calculated	Target	Check	Index
Working plane	$\bar{E}_{\text{perpendicular}}$	623 lx	≥ 500 lx	✓	WP6
	$U_o (g_1)$	0.62	≥ 0.60	✓	WP6
	Lighting power density	12.36 W/m ²	–		
		1.98 W/m ² /100 lx	–		
Glare valuation ⁽¹⁾	$R_{UG, \text{max}}$	18	≤ 19	✓	
Energy estimation ⁽²⁾	Consumption	624 kWh/a	max. 900 kWh/a	✓	
Room	Lighting power density	10.19 W/m ²	–		
		1.64 W/m ² /100 lx	–		

(1) Based on a rectangular space of 4.180 m x 7.000 m and SHR of 0.25.

(2) Calculated using DIN:18599-4.

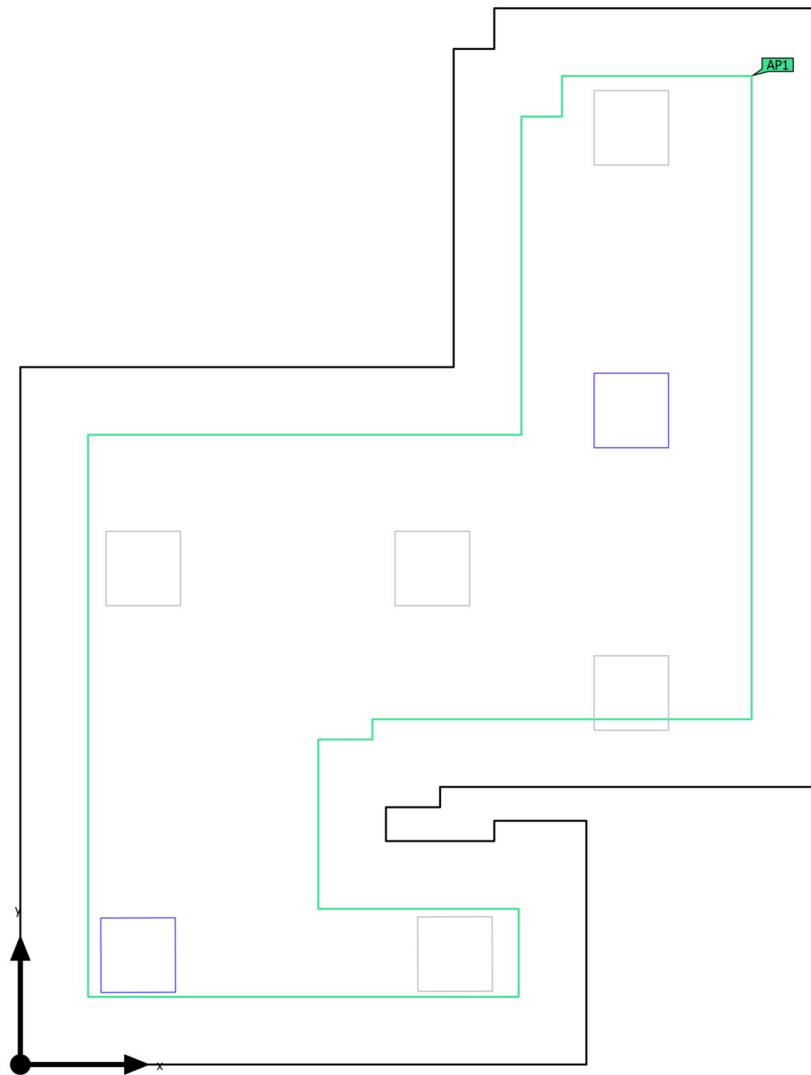
Utilisation profile: DIALux presetting (5.26.2 Standard (office))

Luminaire list

pcs.	Manufacturer	Article No.	Article name	R_{UG}	P	Φ	Luminous efficacy
6	Philips		RC132V SIA W60L60 IA4 OC 43S/840 NO	17	42.0 W	4290 lm	102.2 lm/W
				 –	42.0 W	4290 lm (100 %)	–

Building 1 · Storey 1 · Офис - 33,80м2 (Emergency light scene)

Summary



Ground area	33.49 m²	Clearance height	2.450 m
Reflection factors	Ceiling: 70.0 %, Walls: 50.0 %, Floor: 20.0 %	Mounting height	2.800 m
Maintenance factor	0.80 (fixed)	Height _{working plane}	0.800 m
		Wall zone _{Working plane}	0.260 m

Building 1 · Storey 1 · Офис - 33,80м2 (Emergency light scene)

Summary

Results

	Symbol	Calculated	Target	Check	Index
Room	Lighting power density	2.51 W/m ²	–		

Anti panic surface


Properties	E _{min} (Target)	E _{max}	U _d (Target)	Index
Anti panic surface (Офис - 33,80м2) Perpendicular illuminance (adaptive) Height: 0.000 m	25.3 lx (≥ 0.50 lx) ✓	201 lx	0.13 (≥ 0.025) ✓	AP1

(2) Calculated using DIN:18599-4.

Notes on planning:

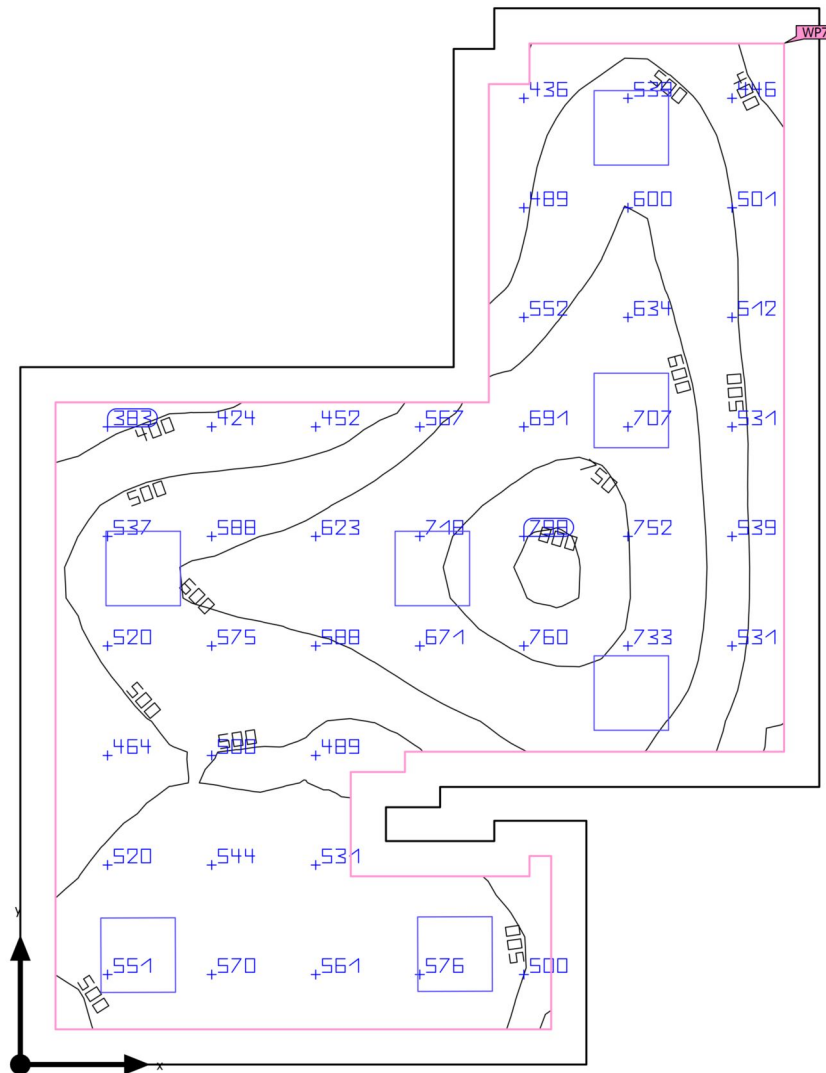
The emergency lighting scene was calculated without reflection and without taking into account the placed furniture.

Luminaire list

pcs.	Manufacturer	Article No.	Article name	P	Φ	Luminous efficacy
2	Philips		RC132V SIA W60L60 IA4 OC 43S/840 NO	42.0 W	4290 lm	102.2 lm/W
				 42.0 W	4290 lm (100 %)	-

Building 1 · Storey 1 · Офис - 33,80м2 (Light scene 1)

Summary



Ground area	33.49 m²	Clearance height	2.450 m
Reflection factors	Ceiling: 70.0 %, Walls: 50.0 %, Floor: 20.0 %	Mounting height	2.800 m
Maintenance factor	0.80 (fixed)	Height _{working plane}	0.800 m
		Wall zone _{Working plane}	0.260 m

Building 1 · Storey 1 · Офис - 33,80м2 (Light scene 1)

Summary

Results

	Symbol	Calculated	Target	Check	Index
Working plane	$\bar{E}_{\text{perpendicular}}$	570 lx	≥ 500 lx	✓	WP7
	$U_o (g_1)$	0.63	≥ 0.60	✓	WP7
	Lighting power density	11.40 W/m ²	–		
		2.00 W/m ² /100 lx	–		
Glare valuation ⁽¹⁾	$R_{UG, \text{max}}$	19	≤ 19	✓	
Energy estimation ⁽²⁾	Consumption	728 kWh/a	max. 1200 kWh/a	✓	
Room	Lighting power density	8.78 W/m ²	–		
		1.54 W/m ² /100 lx	–		

(1) Based on a rectangular space of 5.900 m x 7.800 m and SHR of 0.25.

(2) Calculated using DIN:18599-4.

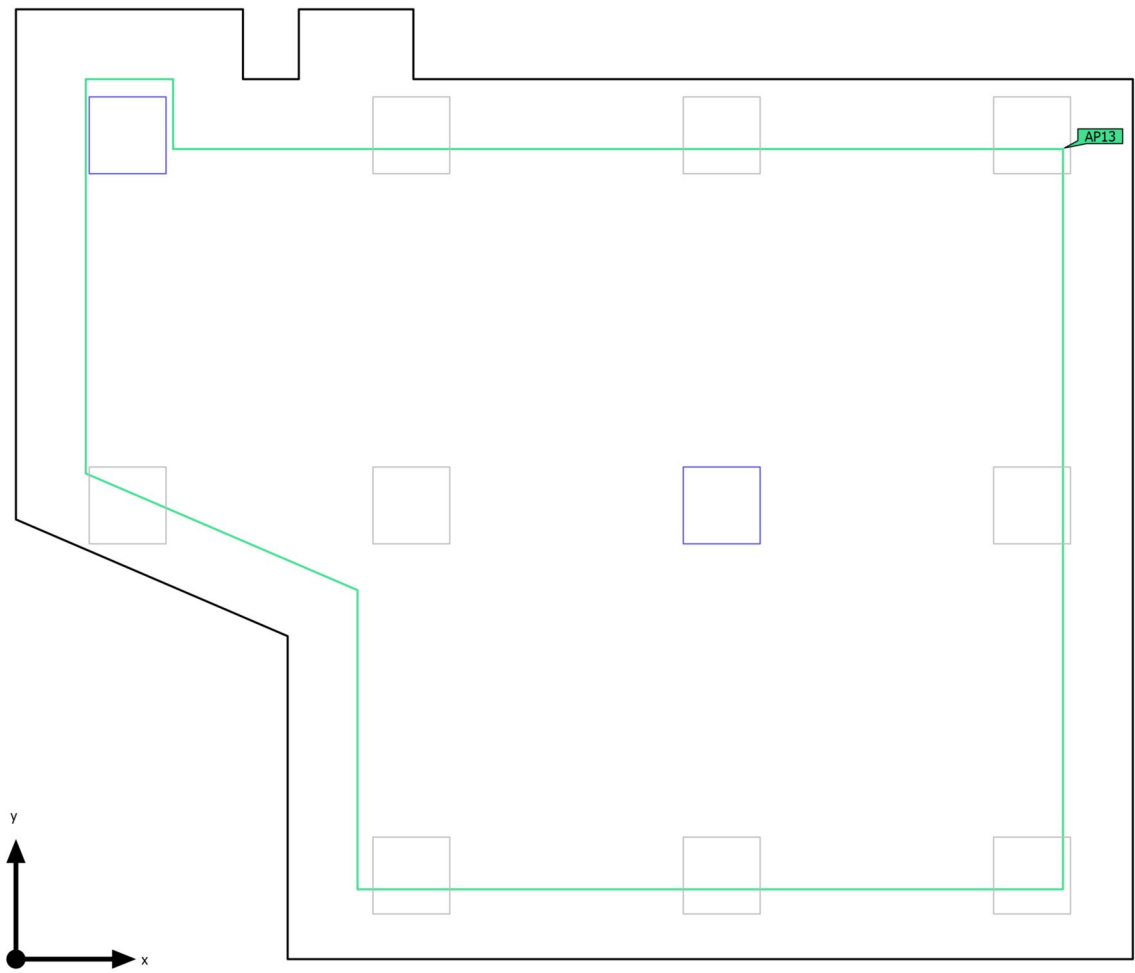
Utilisation profile: DIALux presetting (5.26.2 Standard (office))

Luminaire list

pcs.	Manufacturer	Article No.	Article name	R_{UG}	P	Φ	Luminous efficacy
7	Philips		RC132V SIA W60L60 IA4 OC 43S/840 NO	18	42.0 W	4290 lm	102.2 lm/W
				 –	42.0 W	4290 lm (100 %)	–

Building 1 · Storey 1 · Офис - 47,70м2 (Emergency light scene)

Summary



Ground area	46.28 m ²
Reflection factors	Ceiling: 70.0 %, Walls: 50.0 %, Floor: 20.0 %
Maintenance factor	0.80 (fixed)

Clearance height	2.800 m
Mounting height	2.800 m
Height _{Working plane}	0.800 m
Wall zone _{Working plane}	0.100 m

Building 1 · Storey 1 · Офис - 47,70м2 (Emergency light scene)

Summary

Results

	Symbol	Calculated	Target	Check	Index
Room	Lighting power density	1.81 W/m ²	–		

Anti panic surface


Properties	E _{min} (Target)	E _{max}	U _d (Target)	Index
Anti panic surface (Офис - 47,70м2) Perpendicular illuminance (adaptive) Height: 0.000 m	19.6 lx (≥ 0.50 lx) ✓	202 lx	0.097 (≥ 0.025) ✓	AP13

(2) Calculated using DIN:18599-4.

Notes on planning:

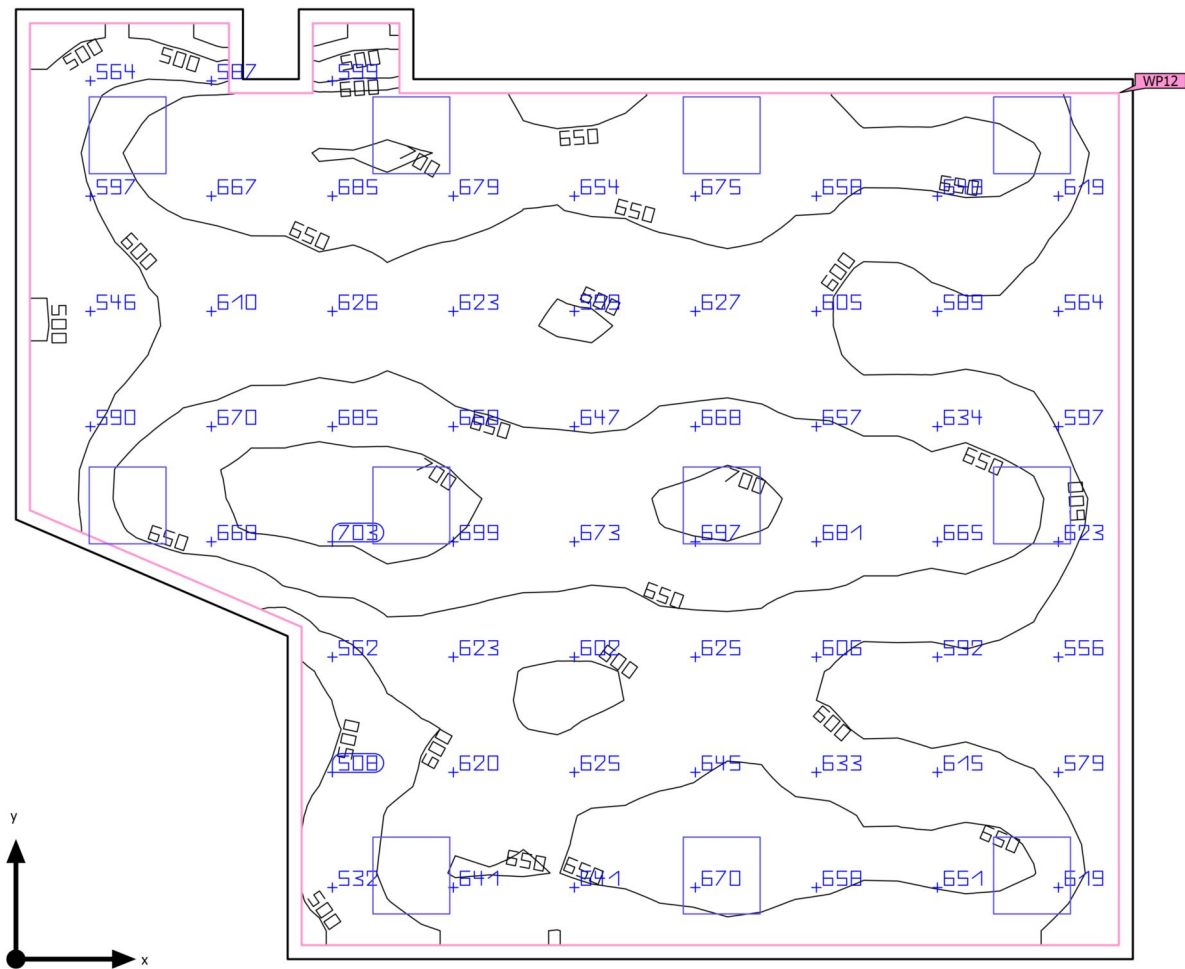
The emergency lighting scene was calculated without reflection and without taking into account the placed furniture.

Luminaire list

pcs.	Manufacturer	Article No.	Article name	P	Φ	Luminous efficacy
2	Philips		RC132V SIA W60L60 IA4 OC 43S/840 NO	42.0 W	4290 lm	102.2 lm/W
				 42.0 W	4290 lm (100 %)	-

Building 1 · Storey 1 · Офис - 47,70м2 (Light scene 1)

Summary



Ground area	46.28 m ²
Reflection factors	Ceiling: 70.0 %, Walls: 50.0 %, Floor: 20.0 %
Maintenance factor	0.80 (fixed)

Clearance height	2.800 m
Mounting height	2.800 m
Height _{Working plane}	0.800 m
Wall zone _{Working plane}	0.100 m

Building 1 · Storey 1 · Офис - 47,70м2 (Light scene 1)

Summary

Results


	Symbol	Calculated	Target	Check	Index
Working plane	$\bar{E}_{\text{perpendicular}}$	629 lx	≥ 500 lx	✓	WP12
	$U_o (g_1)$	0.67	≥ 0.60	✓	WP12
	Lighting power density	10.66 W/m ²	–		
		1.69 W/m ² /100 lx	–		
Glare valuation ⁽¹⁾	$R_{UG, \text{max}}$	19	≤ 19	✓	
Energy estimation ⁽²⁾	Consumption	1143 kWh/a	max. 1650 kWh/a	✓	
Room	Lighting power density	9.98 W/m ²	–		
		1.59 W/m ² /100 lx	–		

(1) Based on a rectangular space of 6.800 m x 7.995 m and SHR of 0.25.

(2) Calculated using DIN:18599-4.

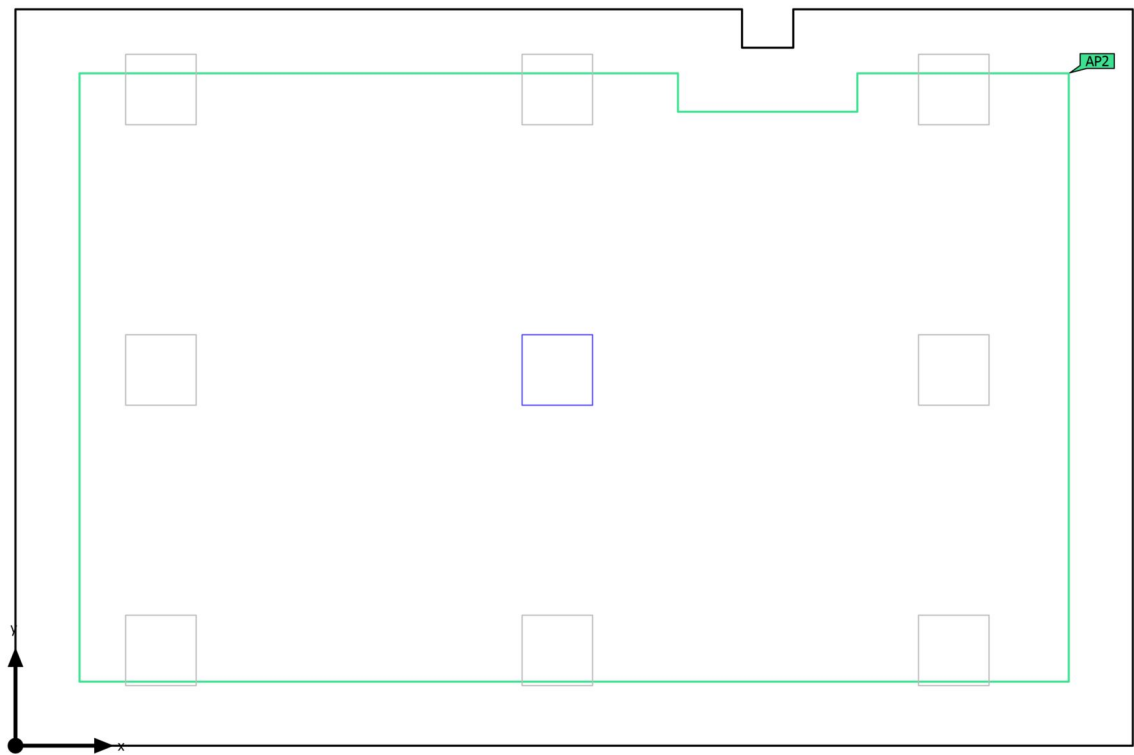
Utilisation profile: DIALux presetting (5.26.2 Standard (office))

Luminaire list

pcs.	Manufacturer	Article No.	Article name	R_{UG}	P	Φ	Luminous efficacy
11	Philips		RC132V SIA W60L60 IA4 OC 43S/840 NO	18	42.0 W	4290 lm	102.2 lm/W
				 –	42.0 W	4290 lm (100 %)	–

Building 1 · Storey 1 · Офис - 68,10м2 (Emergency light scene)

Summary



Ground area	50.02 m ²
Reflection factors	Ceiling: 70.0 %, Walls: 50.0 %, Floor: 20.0 %
Maintenance factor	0.80 (fixed)

Clearance height	2.800 m
Mounting height	2.800 m
Height _{Working plane}	0.800 m
Wall zone _{Working plane}	0.200 m

Building 1 · Storey 1 · Офис - 68,10м2 (Emergency light scene)

Summary

Results

	Symbol	Calculated	Target	Check	Index
Room	Lighting power density	0.84 W/m ²	–		

Anti panic surface


Properties	E _{min} (Target)	E _{max}	U _d (Target)	Index
Anti panic surface (Офис - 68,10м2) Perpendicular illuminance (adaptive) Height: 0.000 m	8.07 lx (≥ 0.50 lx) ✓	197 lx	0.041 (≥ 0.025) ✓	AP2

(2) Calculated using DIN:18599-4.

Notes on planning:

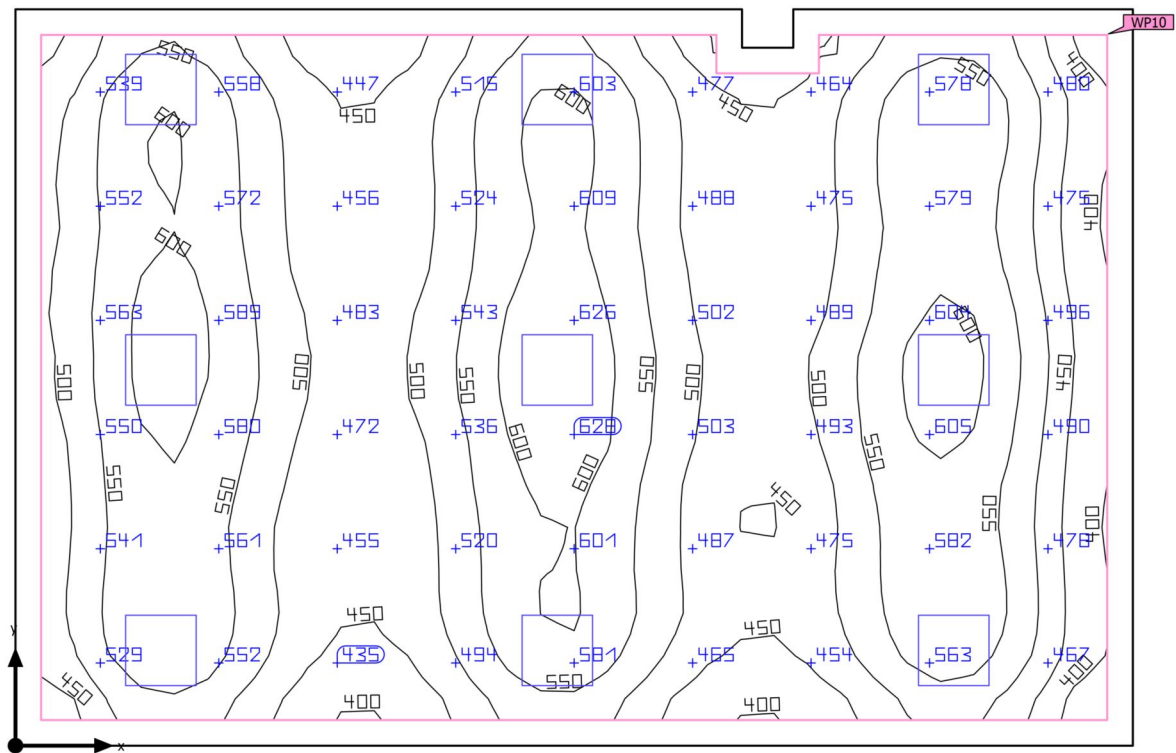
The emergency lighting scene was calculated without reflection and without taking into account the placed furniture.

Luminaire list

pcs.	Manufacturer	Article No.	Article name	P	Φ	Luminous efficacy
1	Philips		RC132V SIA W60L60 IA4 OC 43S/840 NO	42.0 W	4290 lm	102.2 lm/W
				 42.0 W	4290 lm (100 %)	-

Building 1 · Storey 1 · Офис - 68,10м2 (Light scene 1)

Summary



Ground area	50.02 m ²
Reflection factors	Ceiling: 70.0 %, Walls: 50.0 %, Floor: 20.0 %
Maintenance factor	0.80 (fixed)

Clearance height	2.800 m
Mounting height	2.800 m
Height _{Working plane}	0.800 m
Wall zone _{Working plane}	0.200 m

Building 1 · Storey 1 · Офис - 68,10м2 (Light scene 1)

Summary

Results


	Symbol	Calculated	Target	Check	Index
Working plane	$\bar{E}_{\text{perpendicular}}$	523 lx	≥ 500 lx	✓	WP10
	$U_o (g_1)$	0.70	≥ 0.60	✓	WP10
	Lighting power density	8.54 W/m ²	–		
		1.63 W/m ² /100 lx	–		
Glare valuation ⁽¹⁾	$R_{UG, \text{max}}$	19	≤ 19	✓	
Energy estimation ⁽²⁾	Consumption	936 kWh/a	max. 1800 kWh/a	✓	
Room	Lighting power density	7.56 W/m ²	–		
		1.44 W/m ² /100 lx	–		

(1) Based on a rectangular space of 8.720 m x 5.750 m and SHR of 0.25.

(2) Calculated using DIN:18599-4.

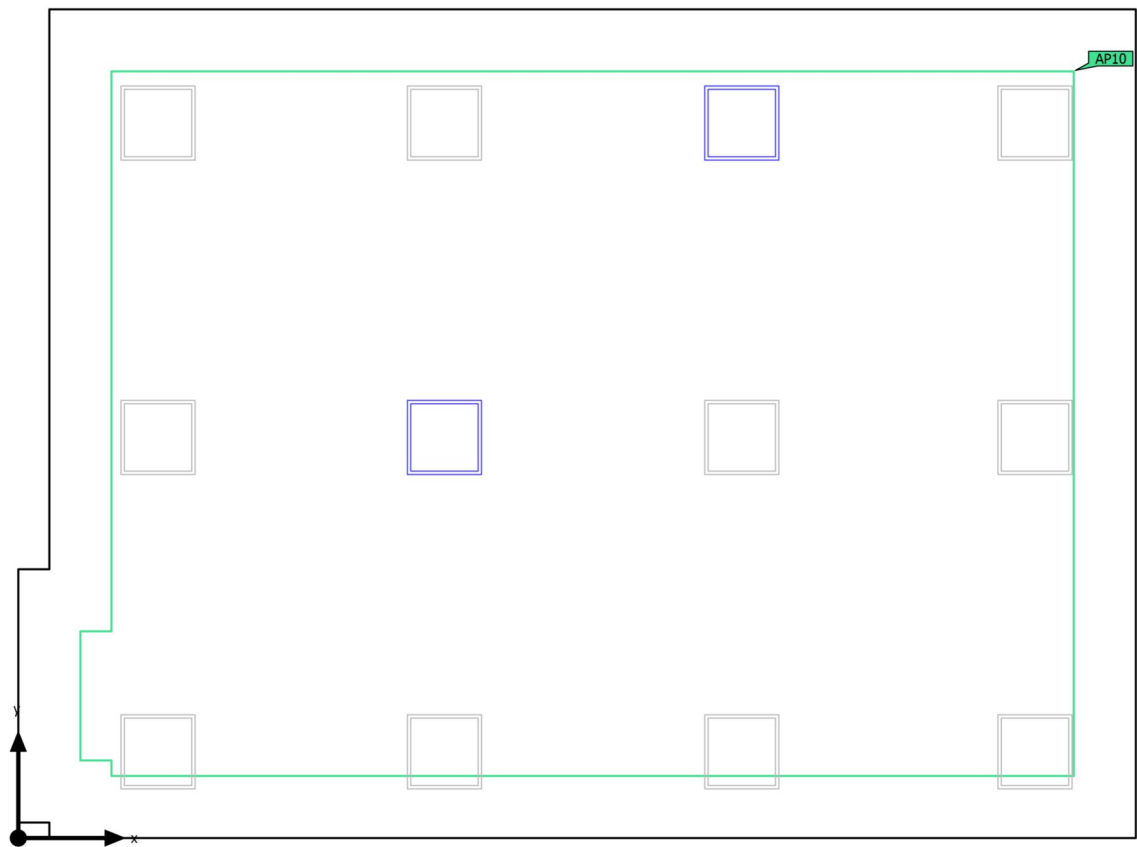
Utilisation profile: DIALux presetting (5.26.2 Standard (office))

Luminaire list

pcs.	Manufacturer	Article No.	Article name	R_{UG}	P	Φ	Luminous efficacy
9	Philips		RC132V SIA W60L60 IA4 OC 43S/840 NO	18	42.0 W	4290 lm	102.2 lm/W
				 –	42.0 W	4290 lm (100 %)	–

Building 1 · Storey 1 · Офис- 55.9м2 (Emergency light scene)

Summary



Ground area	58.92 m ²	Clearance height	2.800 m
Reflection factors	Ceiling: 70.0 %, Walls: 50.0 %, Floor: 20.0 %	Mounting height	2.832 m
Maintenance factor	0.80 (fixed)	Height _{Working plane}	0.800 m
		Wall zone _{Working plane}	0.200 m

Building 1 · Storey 1 · Офис- 55.9м2 (Emergency light scene)

Summary

Results

	Symbol	Calculated	Target	Check	Index
Room	Lighting power density	1.22 W/m ²	–		

Anti panic surface

Properties	E _{min} (Target)	E _{max}	U _d (Target)	Index
Anti panic surface (Офис- 55.9м2) Perpendicular illuminance (adaptive) Height: 0.000 m	5.96 lx (≥ 0.50 lx) ✓	172 lx	0.035 (≥ 0.025) ✓	AP10

(2) Calculated using DIN:18599-4.

Notes on planning:

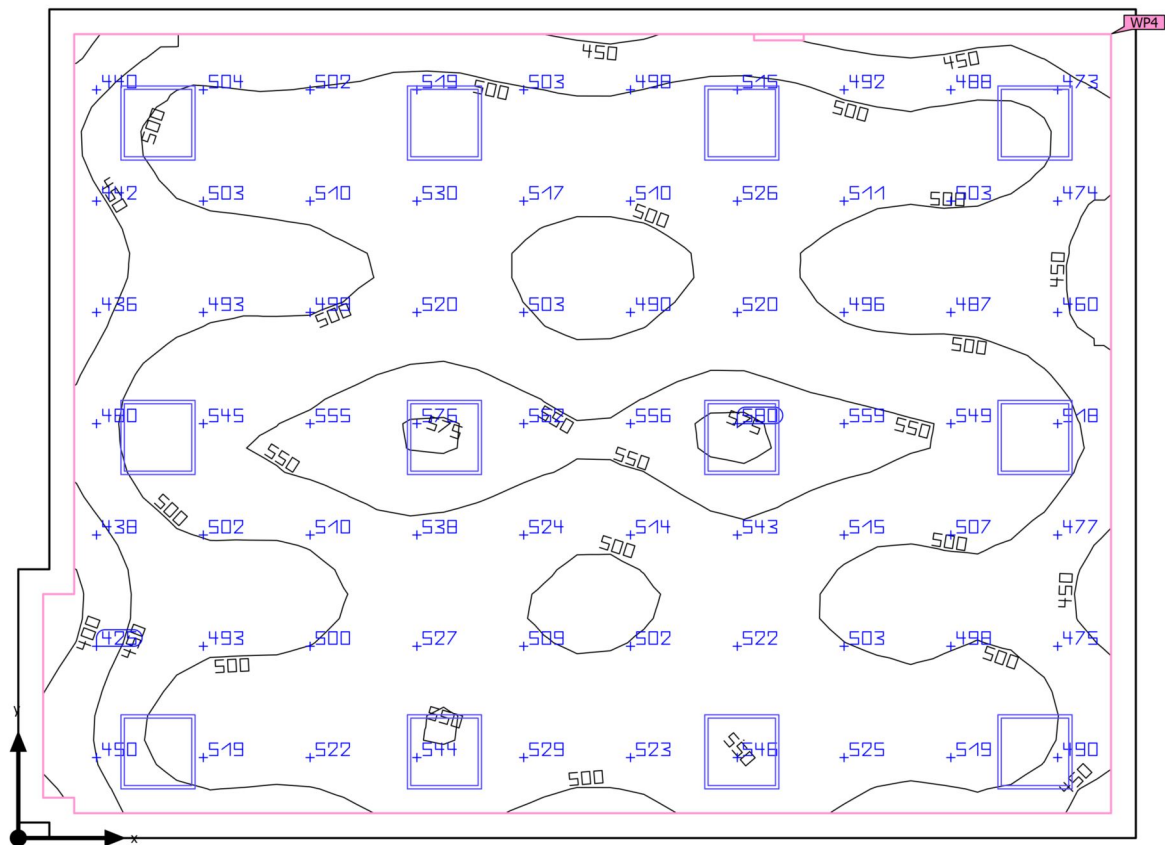
The emergency lighting scene was calculated without reflection and without taking into account the placed furniture.

Luminaire list

pcs.	Manufacturer	Article No.	Article name	P	Φ	Luminous efficacy
2	Philips		RC132V W60L60 1 xLED36S/840 OC	36.0 W	3599 lm	100.0 lm/W
				 36.0 W	3599 lm (100 %)	-

Building 1 · Storey 1 · Офис- 55.9м2 (Light scene 1)

Summary



Ground area	58.92 m ²
Reflection factors	Ceiling: 70.0 %, Walls: 50.0 %, Floor: 20.0 %
Maintenance factor	0.80 (fixed)

Clearance height	2.800 m
Mounting height	2.832 m
Height _{Working plane}	0.800 m
Wall zone _{Working plane}	0.200 m

Building 1 · Storey 1 · Офис- 55.9м2 (Light scene 1)

Summary

Results


	Symbol	Calculated	Target	Check	Index
Working plane	$\bar{E}_{\text{perpendicular}}$	508 lx	$\geq 500 \text{ lx}$	✓	WP4
	$U_o (g_1)$	0.74	≥ 0.60	✓	WP4
	Lighting power density	8.18 W/m ²	–		
		1.61 W/m ² /100 lx	–		
Glare valuation ⁽¹⁾	$R_{UG, \text{max}}$	18	≤ 19	✓	
Energy estimation ⁽²⁾	Consumption	1069 kWh/a	max. 2100 kWh/a	✓	
Room	Lighting power density	7.33 W/m ²	–		
		1.44 W/m ² /100 lx	–		

(1) Based on a rectangular space of 6.675 m x 9.000 m and SHR of 0.25.

(2) Calculated using DIN:18599-4.

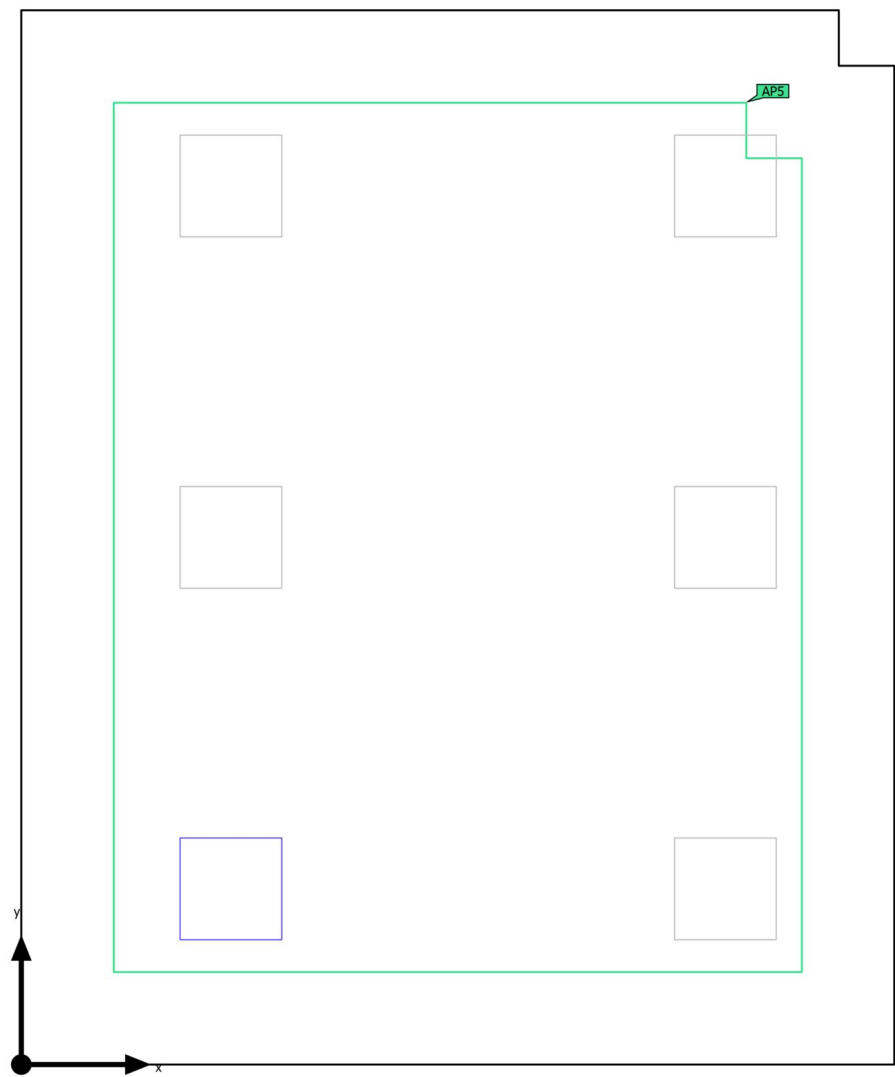
Utilisation profile: DIALux presetting (5.26.2 Standard (office))

Luminaire list

pcs.	Manufacturer	Article No.	Article name	R_{UG}	P	Φ	Luminous efficacy
12	Philips		RC132V W60L60 1 xLED36S/840 OC	18	36.0 W	3599 lm	100.0 lm/W
				 –	36.0 W	3599 lm (100 %)	–

Building 1 · Storey 1 · Офис директор (Emergency light scene)

Summary



Ground area	26.81 m ²
Reflection factors	Ceiling: 70.0 %, Walls: 50.0 %, Floor: 20.0 %
Maintenance factor	0.80 (fixed)

Clearance height	2.800 m
Mounting height	2.800 m
Height _{Working plane}	0.800 m
Wall zone _{Working plane}	0.200 m

Building 1 · Storey 1 · Офис директор (Emergency light scene)

Summary

Results

	Symbol	Calculated	Target	Check	Index
Room	Lighting power density	1.57 W/m²	–		


Anti panic surface

Properties	E _{min} (Target)	E _{max}	U _d (Target)	Index
Anti panic surface (Офис директор) Perpendicular illuminance (adaptive) Height: 0.000 m	5.59 lx (≥ 0.50 lx) ✓	195 lx	0.029 (≥ 0.025) ✓	AP5

(2) Calculated using DIN:18599-4.

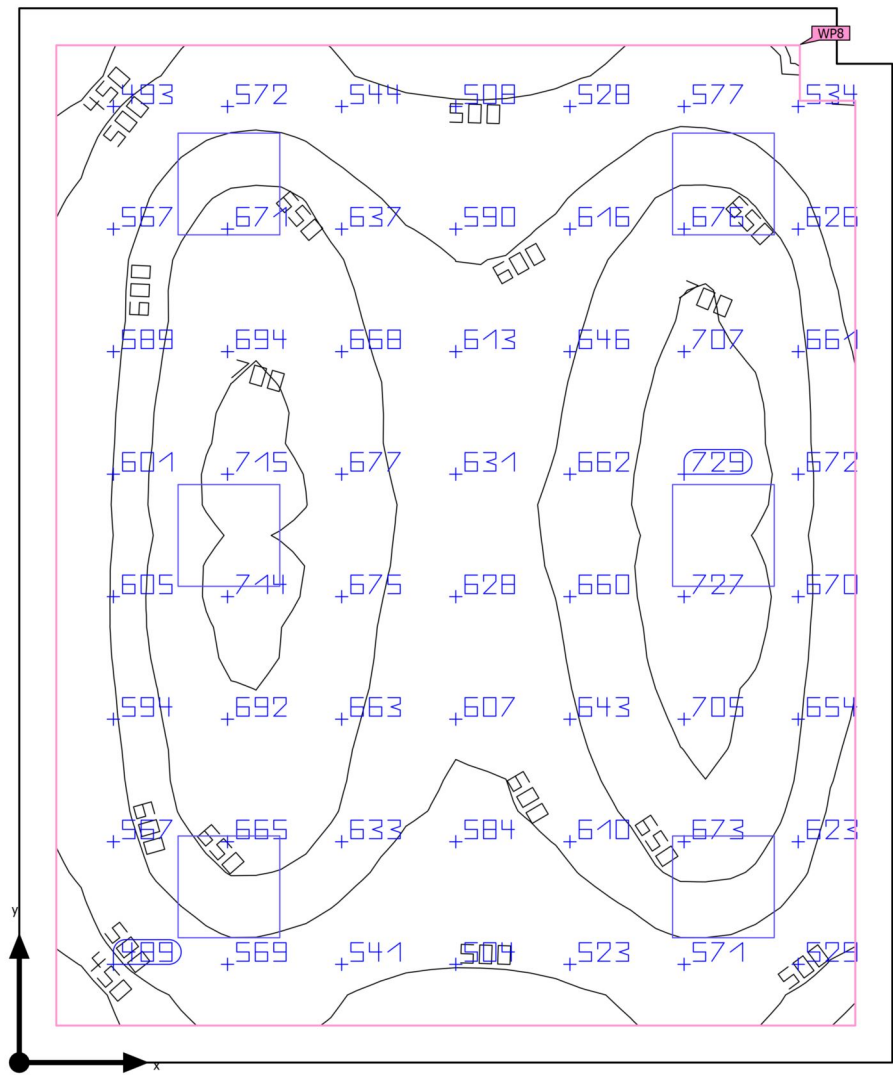
Notes on planning:
The emergency lighting scene was calculated without reflection and without taking into account the placed furniture.

Luminaire list

pcs.	Manufacturer	Article No.	Article name	P	Φ	Luminous efficacy
1	Philips		RC132V SIA W60L60 IA4 OC 43S/840 NO	42.0 W	4290 lm	102.2 lm/W
				 42.0 W	4290 lm (100 %)	-

Building 1 · Storey 1 · Офис директор (Light scene 1)

Summary



Ground area	26.81 m ²
Reflection factors	Ceiling: 70.0 %, Walls: 50.0 %, Floor: 20.0 %
Maintenance factor	0.80 (fixed)

Clearance height	2.800 m
Mounting height	2.800 m
Height _{Working plane}	0.800 m
Wall zone _{Working plane}	0.200 m

Building 1 · Storey 1 · Офис директор (Light scene 1)

Summary

Results


	Symbol	Calculated	Target	Check	Index
Working plane	$\bar{E}_{\text{perpendicular}}$	617 lx	$\geq 500 \text{ lx}$	✓	WP8
	$U_o (g_1)$	0.66	≥ 0.60	✓	WP8
	Lighting power density	11.05 W/m ²	–		
		1.79 W/m ² /100 lx	–		
Glare valuation ⁽¹⁾	$R_{UG, \text{max}}$	18	≤ 19	✓	
Energy estimation ⁽²⁾	Consumption	624 kWh/a	max. 950 kWh/a	✓	
Room	Lighting power density	9.40 W/m ²	–		
		1.52 W/m ² /100 lx	–		

(1) Based on a rectangular space of 4.720 m x 5.700 m and SHR of 0.25.

(2) Calculated using DIN:18599-4.

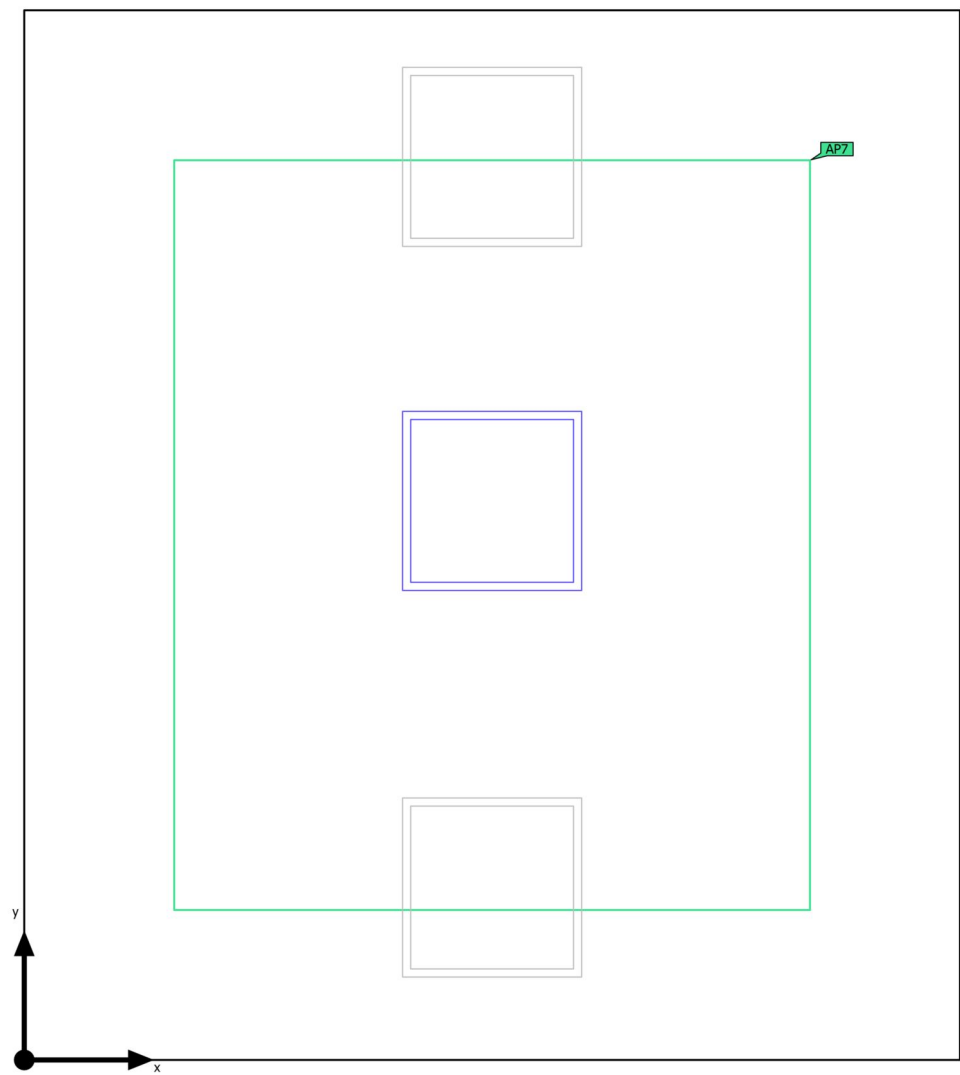
Utilisation profile: DIALux presetting (5.26.2 Standard (office))

Luminaire list

pcs.	Manufacturer	Article No.	Article name	R_{UG}	P	Φ	Luminous efficacy
6	Philips		RC132V SIA W60L60 IA4 OC 43S/840 NO	18	42.0 W	4290 lm	102.2 lm/W
				 –	42.0 W	4290 lm (100 %)	–

Building 1 · Storey 1 · Офис секретар (Emergency light scene)

Summary



Ground area	10.92 m ²	Clearance height	2.800 m
Reflection factors	Ceiling: 70.0 %, Walls: 50.0 %, Floor: 20.0 %	Mounting height	2.832 m
Maintenance factor	0.80 (fixed)	Height _{Working plane}	0.800 m
		Wall zone _{Working plane}	0.100 m

Building 1 · Storey 1 · Офис секретар (Emergency light scene)

Summary

Results

	Symbol	Calculated	Target	Check	Index
Room	Lighting power density	3.30 W/m ²	–		

Anti panic surface

Properties	E _{min} (Target)	E _{max}	U _d (Target)	Index
Anti panic surface (Офис секретар) Perpendicular illuminance (adaptive) Height: 0.000 m	88.5 lx (≥ 0.50 lx) ✓	154 lx	0.57 (≥ 0.025) ✓	AP7

(2) Calculated using DIN:18599-4.

Notes on planning:

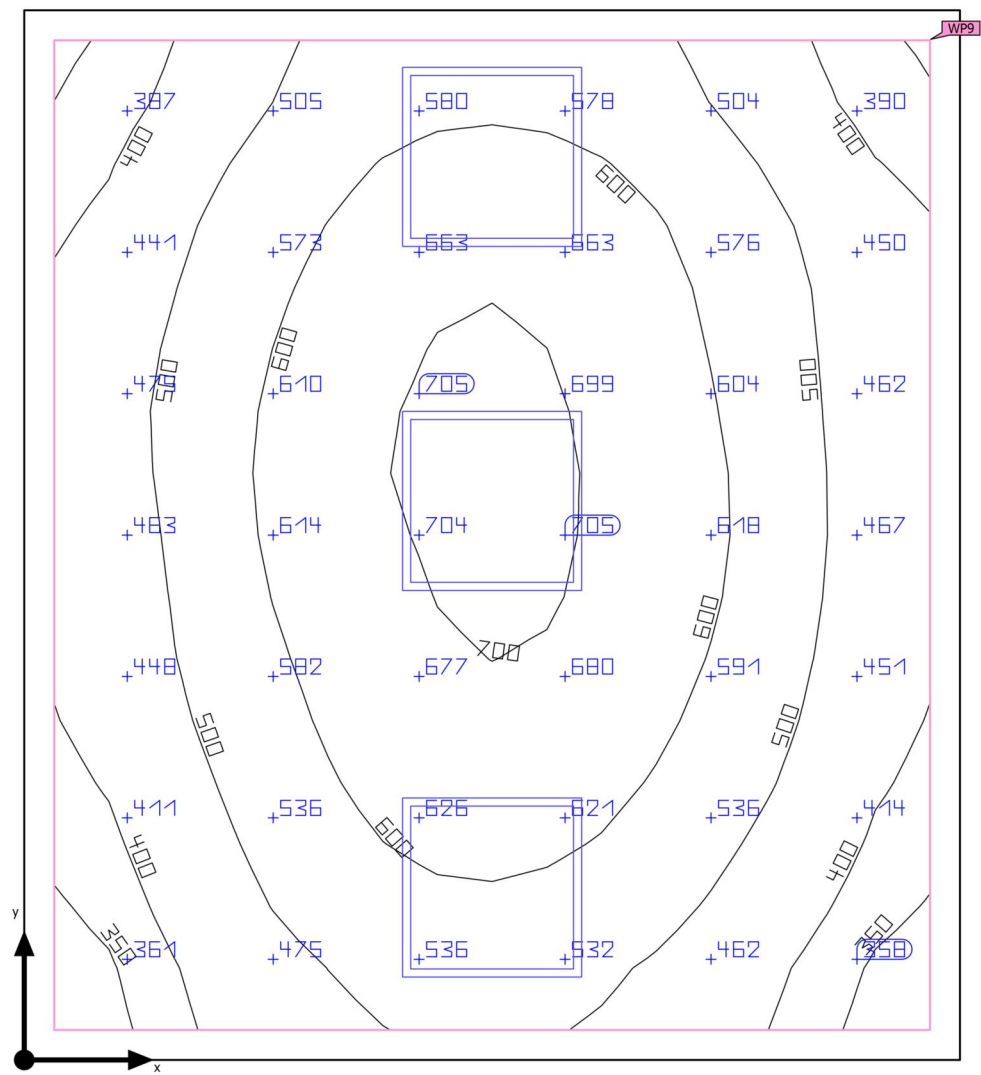
The emergency lighting scene was calculated without reflection and without taking into account the placed furniture.

Luminaire list

pcs.	Manufacturer	Article No.	Article name	P	Φ	Luminous efficacy
1	Philips		RC132V W60L60 1 xLED36S/840 OC	36.0 W	3599 lm	100.0 lm/W
				 36.0 W	3599 lm (100 %)	-

Building 1 · Storey 1 · Офис секретар (Light scene 1)

Summary



Ground area	10.92 m ²
Reflection factors	Ceiling: 70.0 %, Walls: 50.0 %, Floor: 20.0 %
Maintenance factor	0.80 (fixed)

Clearance height	2.800 m
Mounting height	2.832 m
Height _{Working plane}	0.800 m
Wall zone _{Working plane}	0.100 m

Building 1 · Storey 1 · Офис секретар (Light scene 1)

Summary

Results


	Symbol	Calculated	Target	Check	Index
Working plane	$\bar{E}_{\text{perpendicular}}$	541 lx	≥ 500 lx	✓	WP9
	$U_o (g_1)$	0.60	≥ 0.60	✓	WP9
	Lighting power density	11.21 W/m ²	–		
		2.07 W/m ² /100 lx	–		
Glare valuation ⁽¹⁾	$R_{UG, \text{max}}$	17	≤ 19	✓	
Energy estimation ⁽²⁾	Consumption	267 kWh/a	max. 400 kWh/a	✓	
Room	Lighting power density	9.89 W/m ²	–		
		1.83 W/m ² /100 lx	–		

(1) Based on a rectangular space of 3.120 m x 3.500 m and SHR of 0.25.

(2) Calculated using DIN:18599-4.

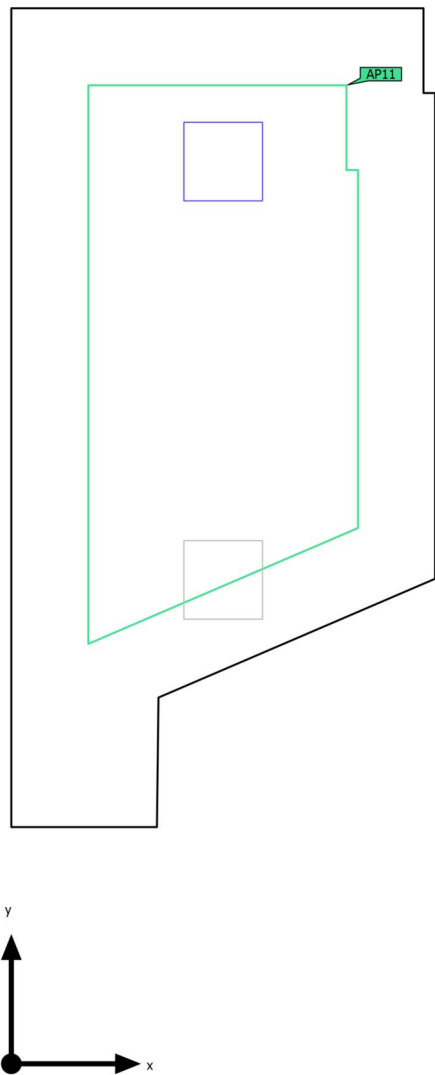
Utilisation profile: DIALux presetting (5.26.2 Standard (office))

Luminaire list

pcs.	Manufacturer	Article No.	Article name	R_{UG}	P	Φ	Luminous efficacy
3	Philips		RC132V W60L60 1 xLED36S/840 OC	16	36.0 W	3599 lm	100.0 lm/W
				 –	36.0 W	3599 lm (100 %)	–

Building 1 · Storey 1 · Охрана (Emergency light scene)

Summary



Ground area	12.37 m ²
Reflection factors	Ceiling: 70.0 %, Walls: 50.0 %, Floor: 20.0 %
Maintenance factor	0.80 (fixed)

Clearance height	2.800 m
Mounting height	2.800 m
Height _{Working plane}	0.800 m
Wall zone _{Working plane}	0.300 m

Building 1 · Storey 1 · Охрана (Emergency light scene)

Summary

Results

	Symbol	Calculated	Target	Check	Index
Room	Lighting power density	2.43 W/m ²	–		

Anti panic surface


Properties	E _{min} (Target)	E _{max}	U _d (Target)	Index
Anti panic surface (Охрана) Perpendicular illuminance (adaptive) Height: 0.000 m	22.0 lx (≥ 0.50 lx) ✓	222 lx	0.099 (≥ 0.025) ✓	AP11

(2) Calculated using DIN:18599-4.

Notes on planning:

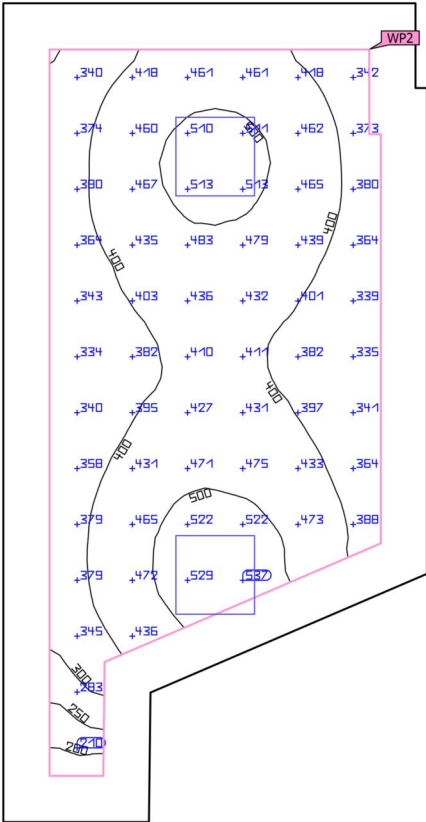
The emergency lighting scene was calculated without reflection and without taking into account the placed furniture.

Luminaire list

pcs.	Manufacturer	Article No.	Article name	P	Φ	Luminous efficacy
1	Philips		RC461B PSD W60L60 PSD W60L60 VPC PIP LED40S/- NO	30.0 W	4000 lm	133.3 lm/W
				 30.0 W	4000 lm (100 %)	-

Building 1 · Storey 1 · Охрана (Light scene 1)

Summary



Ground area	12.37 m ²
Reflection factors	Ceiling: 70.0 %, Walls: 50.0 %, Floor: 20.0 %
Maintenance factor	0.80 (fixed)

Clearance height	2.800 m
Mounting height	2.800 m
Height _{Working plane}	0.800 m
Wall zone _{Working plane}	0.300 m

Building 1 · Storey 1 · Охрана (Light scene 1)

Summary

Results

	Symbol	Calculated	Target	Check	Index
Working plane	$\bar{E}_{\text{perpendicular}}$	417 lx	≥ 300 lx	✓	WP2
	$U_o (g_1)$	0.42	≥ 0.40	✓	WP2
	Lighting power density	7.43 W/m ²	–		
		1.78 W/m ² /100 lx	–		
Glare valuation ⁽¹⁾	$R_{UG, \text{max}}$	16	≤ 19	✓	
Energy estimation ⁽²⁾	Consumption	8.10 kWh/a	max. 450 kWh/a	✓	
Room	Lighting power density	4.85 W/m ²	–		
		1.16 W/m ² /100 lx	–		

(1) Based on a rectangular space of 5.314 m x 2.750 m and SHR of 0.25.

(2) Calculated using DIN:18599-4.

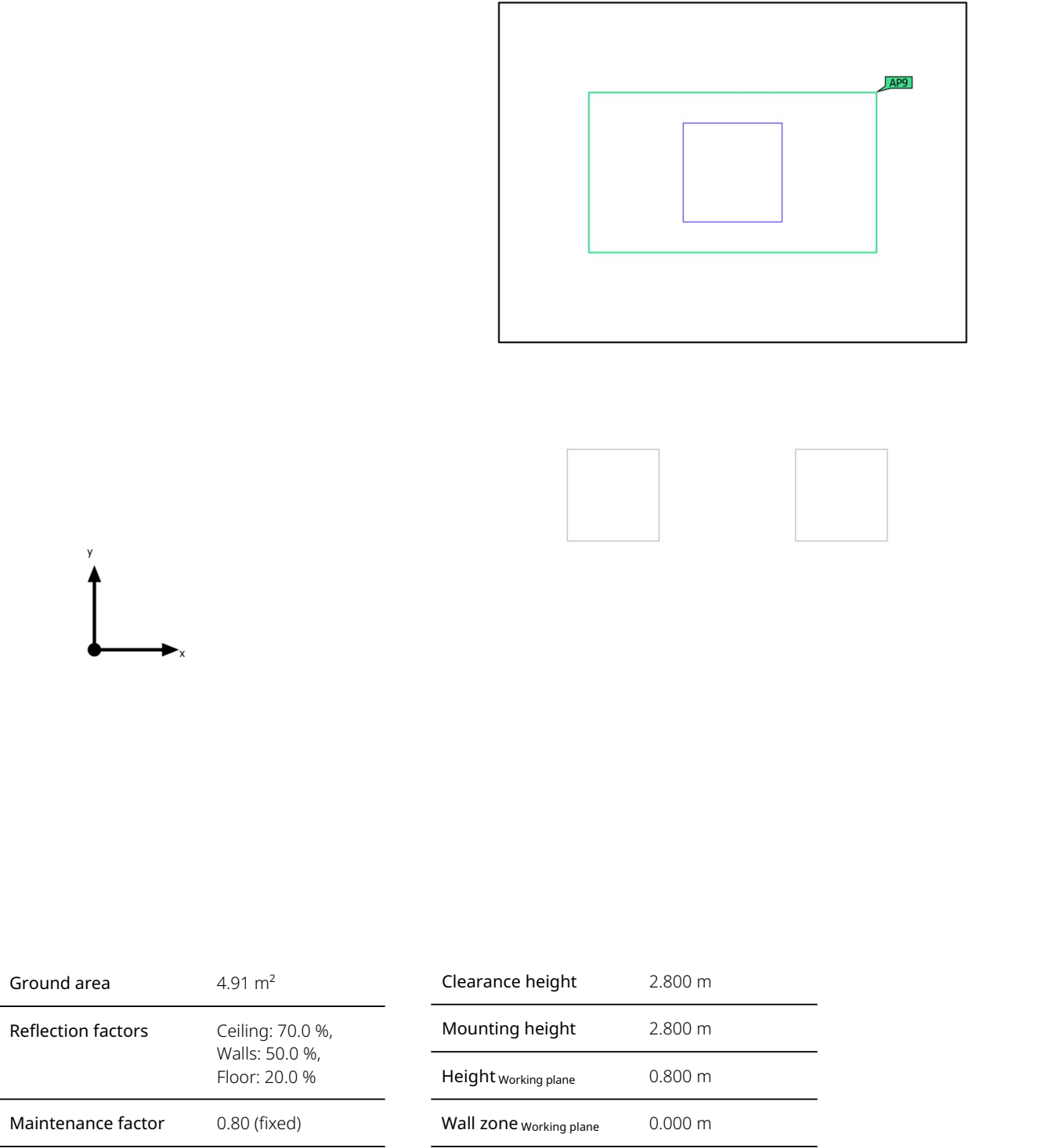
Utilisation profile: Offices (5.26.1 Filing, copying, etc.)

Luminaire list

pcs.	Manufacturer	Article No.	Article name	R_{UG}	P	Φ	Luminous efficacy
2	Philips		RC461B PSD W60L60 PSD W60L60 VPC PIP LED40S/- NO	16	30.0 W	4000 lm	133.3 lm/W
				 –	30.0 W	4000 lm (100 %)	–

Building 1 · Storey 1 · Регистратура класифицирана информация (Emergency light scene)

Summary



Building 1 · Storey 1 · Регистратура класифицирана информация (Emergency light scene)

Summary

Results

	Symbol	Calculated	Target	Check	Index
Room	Lighting power density	8.55 W/m ²	–		

Anti panic surface


Properties	E _{min} (Target)	E _{max}	U _d (Target)	Index
Anti panic surface (Регистратура класифицирана информация) Perpendicular illuminance (adaptive) Height: 0.000 m	172 lx (≥ 0.50 lx) ✓	197 lx	0.87 (≥ 0.025) ✓	AP9

(2) Calculated using DIN:18599-4.

Notes on planning:

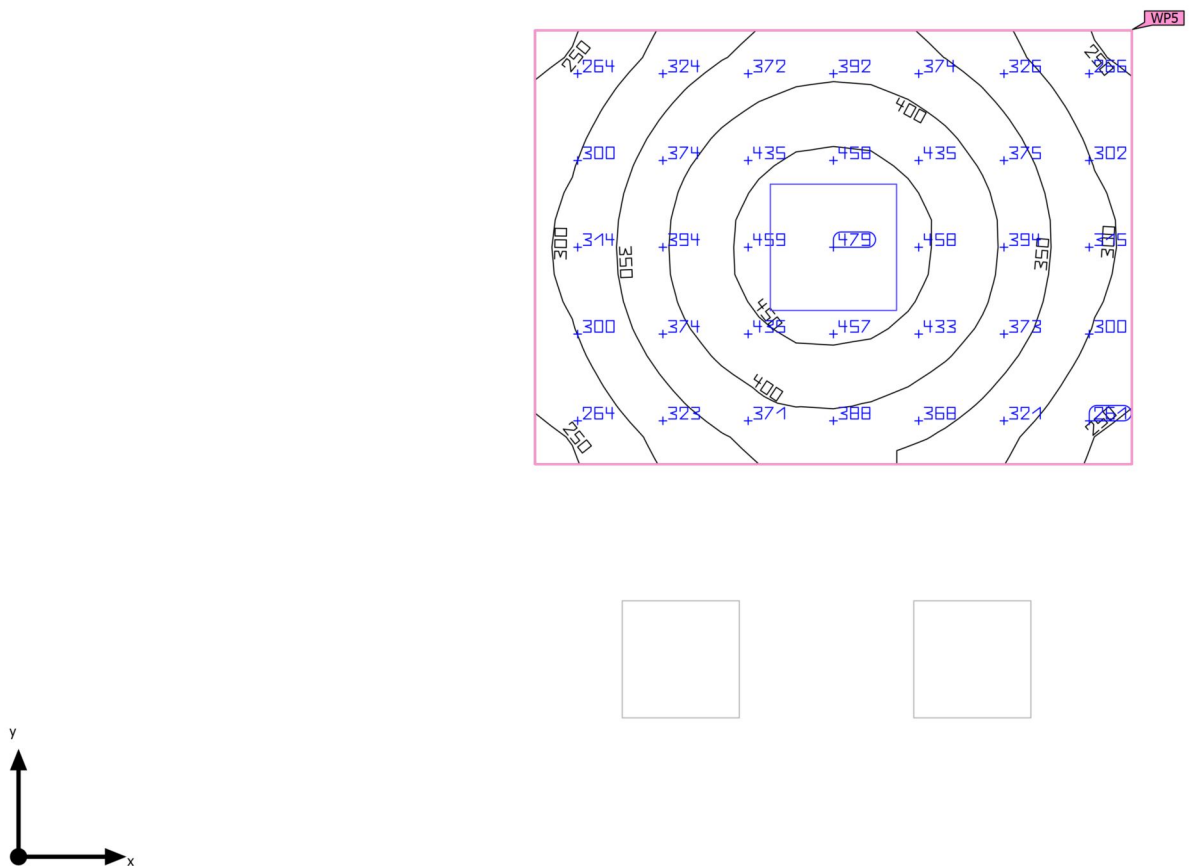
The emergency lighting scene was calculated without reflection and without taking into account the placed furniture.

Luminaire list

pcs.	Manufacturer	Article No.	Article name	P	Φ	Luminous efficacy
1	Philips		RC132V SIA W60L60 IA4 OC 43S/840 NO	42.0 W	4290 lm	102.2 lm/W
				 42.0 W	4290 lm (100 %)	-

Building 1 · Storey 1 · Регистратура класифицирана информация (Light scene 1)

Summary



Ground area	4.91 m ²
Reflection factors	Ceiling: 70.0 %, Walls: 50.0 %, Floor: 20.0 %
Maintenance factor	0.80 (fixed)

Clearance height	2.800 m
Mounting height	2.800 m
Height Working plane	0.800 m
Wall zone Working plane	0.000 m

Building 1 · Storey 1 · Регистратура класифицирана информация (Light scene 1)

Summary

Results


	Symbol	Calculated	Target	Check	Index
Working plane	$\bar{E}_{\text{perpendicular}}$	365 lx	$\geq 300 \text{ lx}$	✓	WP5
	$U_o (g_1)$	0.64	≥ 0.60	✓	WP5
Glare valuation ⁽¹⁾	$R_{UG, \text{max}}$	16	≤ 22	✓	
Energy estimation ⁽²⁾	Consumption	116 kWh/a	max. 350 kWh/a	✓	
Room	Lighting power density	8.55 W/m ²	–		
		2.34 W/m ² /100 lx	–		

(1) Based on a rectangular space of 2.600 m x 1.890 m and SHR of 0.25.

(2) Calculated using DIN:18599-4.

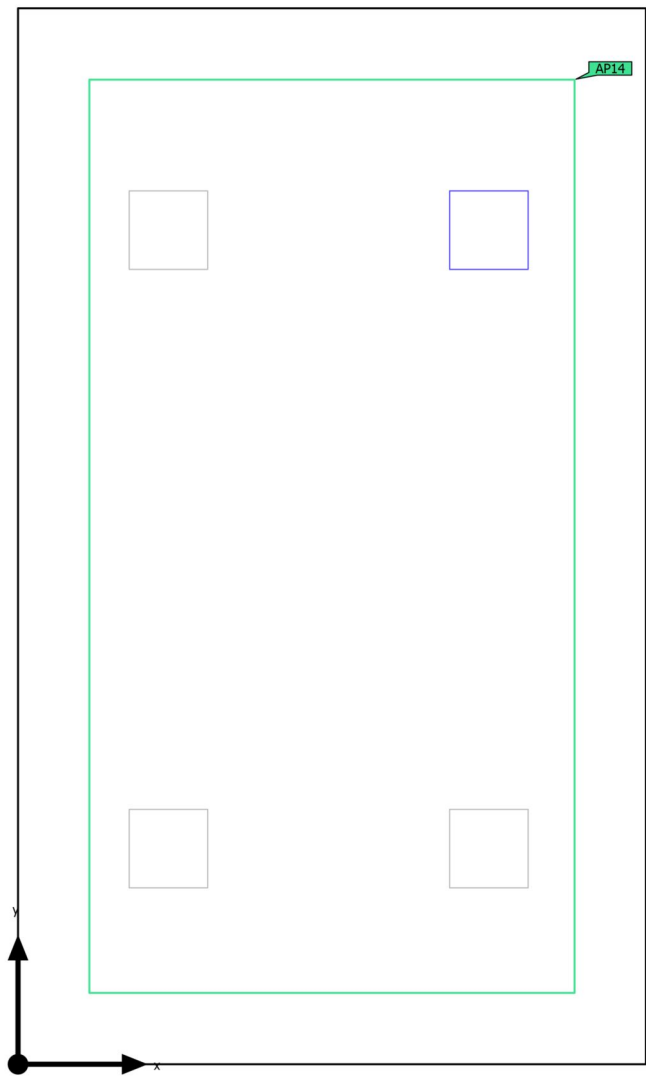
Utilisation profile: Offices (5.26.6 Reception desk)

Luminaire list

pcs.	Manufacturer	Article No.	Article name	R_{UG}	P	Φ	Luminous efficacy
1	Philips		RC132V SIA W60L60 IA4 OC 43S/840 NO	16	42.0 W	4290 lm	102.2 lm/W
				 –	42.0 W	4290 lm (100 %)	–

Building 1 · Storey 1 · Стая за почивка (Emergency light scene)

Summary



Ground area	32.56 m²
Reflection factors	Ceiling: 70.0 %, Walls: 50.0 %, Floor: 20.0 %
Maintenance factor	0.80 (fixed)

Clearance height	2.800 m
Mounting height	2.800 m
Height _{Working plane}	0.800 m
Wall zone _{Working plane}	0.000 m

Building 1 · Storey 1 · Стая за почивка (Emergency light scene)

Summary

Results

	Symbol	Calculated	Target	Check	Index
Room	Lighting power density	1.29 W/m ²	–		

Anti panic surface


Properties	E _{min} (Target)	E _{max}	U _d (Target)	Index
Anti panic surface (Стая за почивка) Perpendicular illuminance (adaptive) Height: 0.000 m	3.03 lx (≥ 0.50 lx) ✓	196 lx	0.015 (≥ 0.025) ✗	AP14

(2) Calculated using DIN:18599-4.

Notes on planning:

The emergency lighting scene was calculated without reflection and without taking into account the placed furniture.

Luminaire list

pcs.	Manufacturer	Article No.	Article name	P	Φ	Luminous efficacy
1	Philips		RC132V SIA W60L60 IA4 OC 43S/840 NO	42.0 W	4290 lm	102.2 lm/W
				 42.0 W	4290 lm (100 %)	-